

ATELJÉ Ö

2024



# INDEX

OUR ATELIER

p. 04

#031 SAVANNEN

p. 20

#003 BUNKER 319

p. 52

#004 DJUPVIKE

p. 74

#001 VILLA BUTTER

p. 102

#034 SAHARA 5

p. 130

#005 CLIFFHOUSE

p. 140

#032 HELLVI

p. 150

#077 CHARLOTTENLUND KIRKE

p. 168

#028 VILLA FJÄLLSVIK

p. 182

#037 Ö17

p. 192

CONTACT

p. 208

PROFILE

ATELJÉ Ö

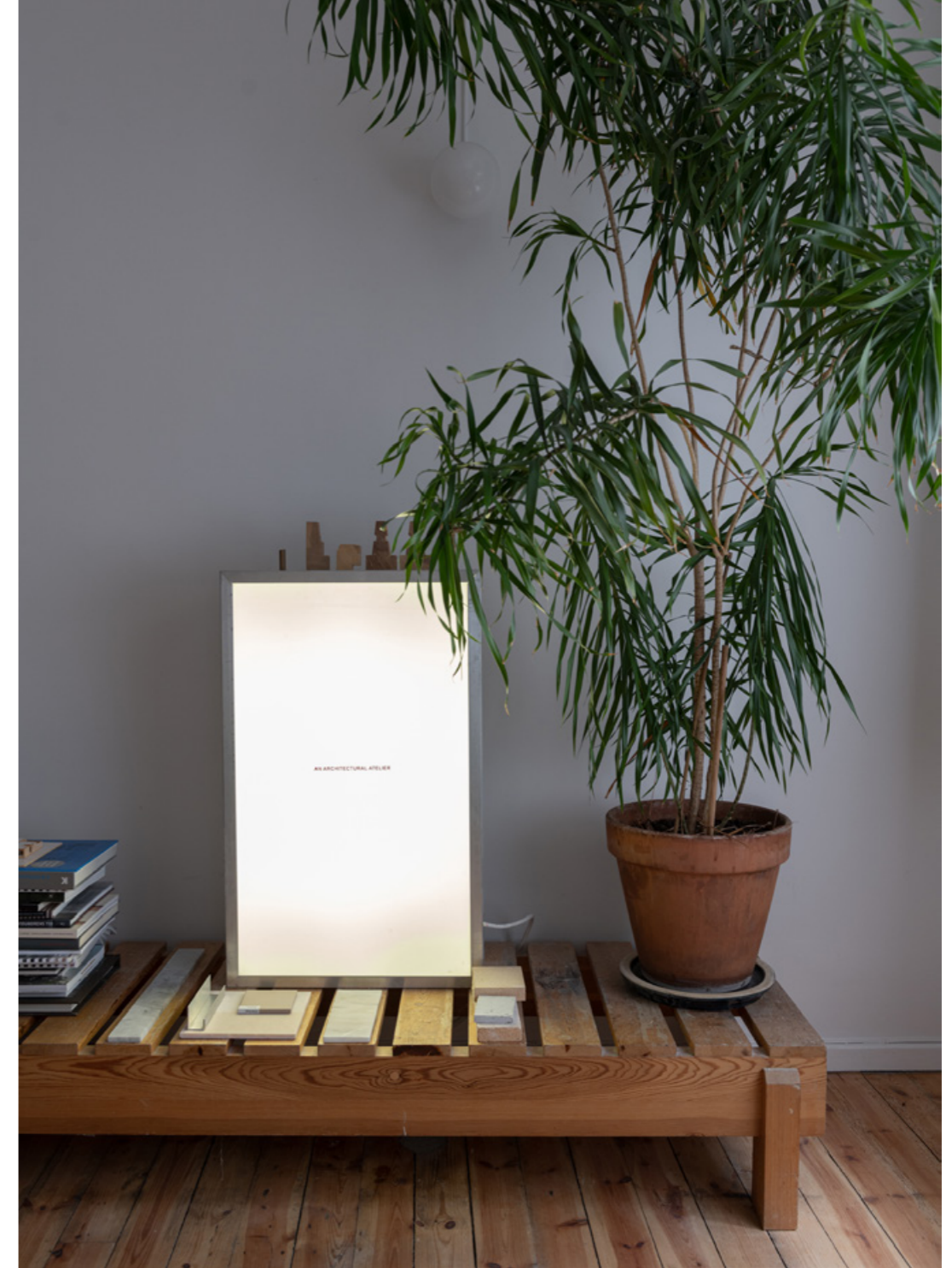


ABOUT

WE ARE AN  
ARCHITECTURAL PRACTICE !

IN OUR AWARD WINNING ATELIER WE REGARD ARCHITECTURE ONE OF THE FINE ARTS AND OUR WORK AS THAT OF ARTISTS OF ARCHITECTURE. WE BELIEVE THAT BUILDINGS CAN HELP RECONNECT MAN WITH NATURE, SPARK JOY, CULTIVATE CALMNESS AND BE A SOURCE OF INSPIRATION. FOR YEARS WE HAVE BEEN WORKING WITH THE LOCAL GOTLANDIC NATURE AS A GENERATOR OF STRONG ARCHITECTURAL EXPRESSION. WE LOVE CONTEXT BASED WORK, WHETHER IT'S ON A SMALLER OR LARGER SCALE, LOCATED ON THE ISLAND, THE MAINLAND OR ABROAD.

LIKE ARCHITECTS OF PAST TIMES, WE TAKE GREAT PRIDE IN OUR PROFESSION AND STRIVE TO TAKE ON A LEADING ROLE IN THE ENTIRE BUILDING PROCESS. WE SPECIALIZE IN TAKING ARCHITECTURAL PROJECTS FROM INITIAL IDEA TO THE HANDING OVER OF THE KEY TO THE CLIENTS HAND. IN CLOSE COLLABORATION WITH CRAFTSMEN AND BUILDERS WE AIM TO CREATE PRAGMATIC AND BEAUTIFUL SPACES FOR LIFE, INSIDE AND OUT.





























## #031 SAVANNEN



**location:** bungenäs, gotland **architecture:** ateljé ö: building permit, construction drawings & execution **project:** 2020 - 2022  
**photography:** andy liffner, by architects **publications:** amag, tidskriften arkitektur, residence, maja

SAVANNEN 8 IS NAMED AFTER THE ARCHITECT'S NICKNAME FOR THE SMALL, BARREN FIELD THE PROJECT IS BUILT NEXT TO. TALL GRASS, SINGULAR BUSHES AND A FEW CROOKED JUNIPERS, A SWEDISH LITTLE VERSION OF A SAVANNAH. SITUATED IN BUNGENÄS, RIGHT NEXT TO THE OCEAN ON THE ISLAND OF GOTLAND.

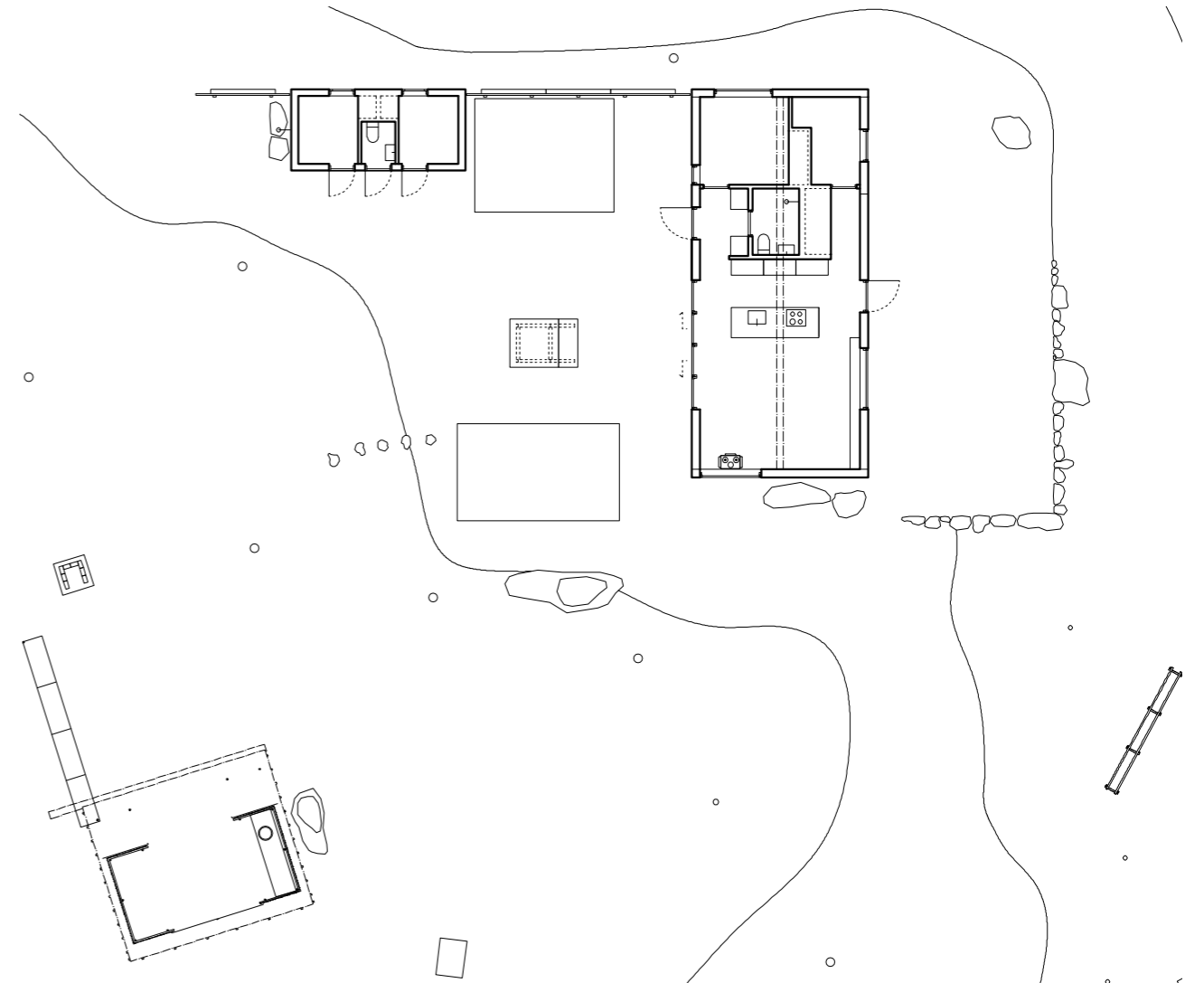
BUT THE INSPIRATION FOR THE HOUSE COMES NOT FROM NATURE BUT FROM INDUSTRY. AN EVERYDAY LIFE IMAGE OF A TRANSFORMER SUBSTATION KIOSK WAS THE FIRST REFERENCE IMAGE WHEN THE CONCEPTUAL WORK BEGAN. ON SITE A COUPLE OF OLD CONCRETE BLOCKS WAS FOUND AND WORKED AROUND. THE HARSH EXPRESSION MATCHES THE SURROUNDINGS, AS THE HOUSE IS NEXT DOOR NEIGHBOR WITH BUNKERS AND OTHER REMNANTS OF MILITARY ACTIVITY.

THE PROJECT WAS A DREAM ASSIGNMENT. A RESTRICTED BUDGET BUT COMPLETE ARTISTIC FREEDOM MEANT BOTH A VERY OBVIOUS FRAMEWORK IN ONE ASPECT AS WELL AS NO FRAMEWORK AT ALL. THE LIMITED BUDGET FORCED CLEVER SOLUTIONS.

PREFABRICATED CONCRETE WALLS WERE USED FOR THE RECTANGLE SHAPED HOUSE. IN CLOSE COOPERATION WITH A LOCAL CONCRETE FACTORY A SPECIAL METHOD WAS CREATED FOR THE HOUSE IN ORDER TO GET THE RIGHT ROUGHNESS FOR THE FACADE. A LOT OF ATELJÉ Ö'S PROJECTS CONTAIN CUSTOM MADE COMPONENTS. SAVANNEN 8 IS NO EXCEPTION, BUT THE DIFFERENCE IS THAT EVERYTHING IN THE HOUSE IS INDUSTRIALLY PRODUCED. THE KITCHEN FAN FOR EXAMPLE WAS MADE FROM A GALVANIZED STEEL FOOT GRATE.

AS A COUNTERWEIGHT TO THE INDUSTRIAL WAY OF WORKING A HANDFUL OF TILES WERE PRESSED UPSIDE DOWN INTO THE CONCRETE BLOCKS AS THEY WERE BEING CAST. AN ELEMENT OF ORNAMENTATION TO BREAK AWAY FROM THE PREFAB ATMOSPHERE.

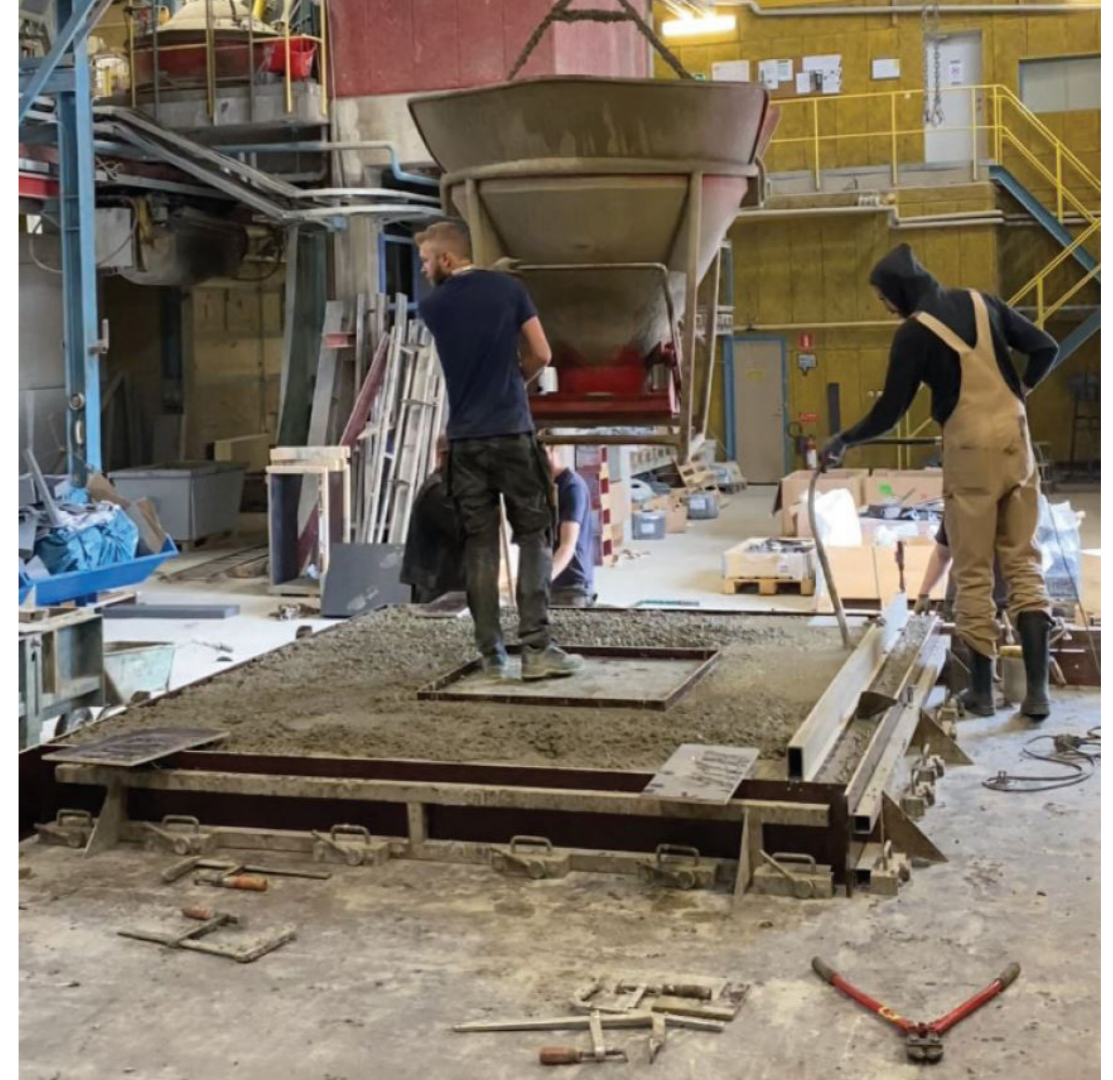




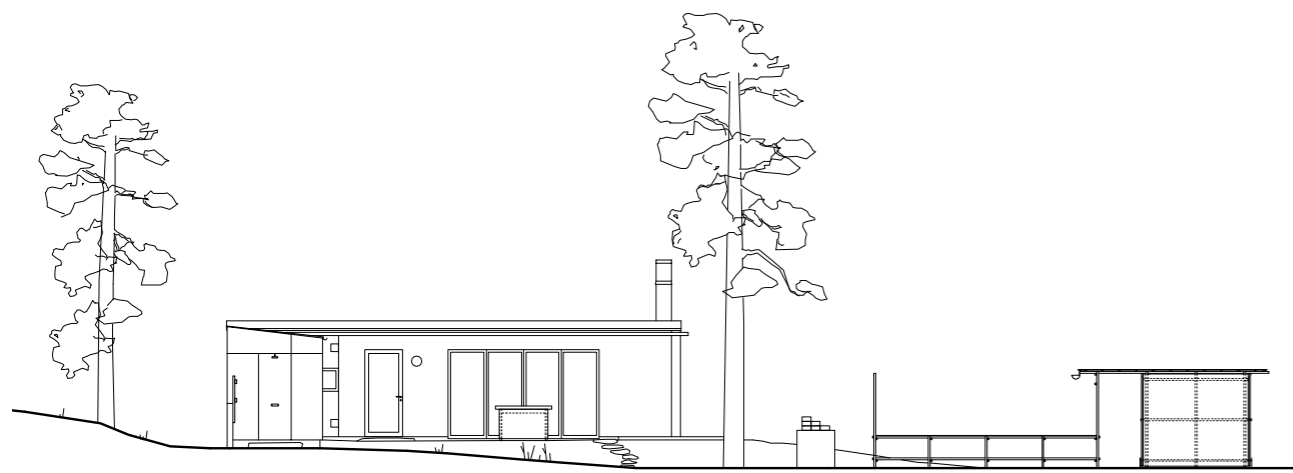








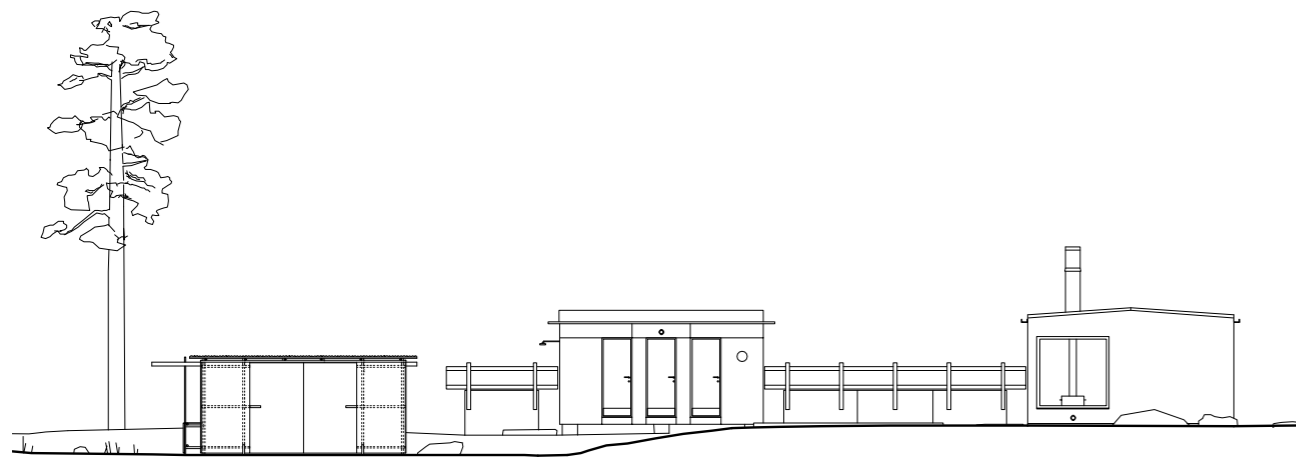




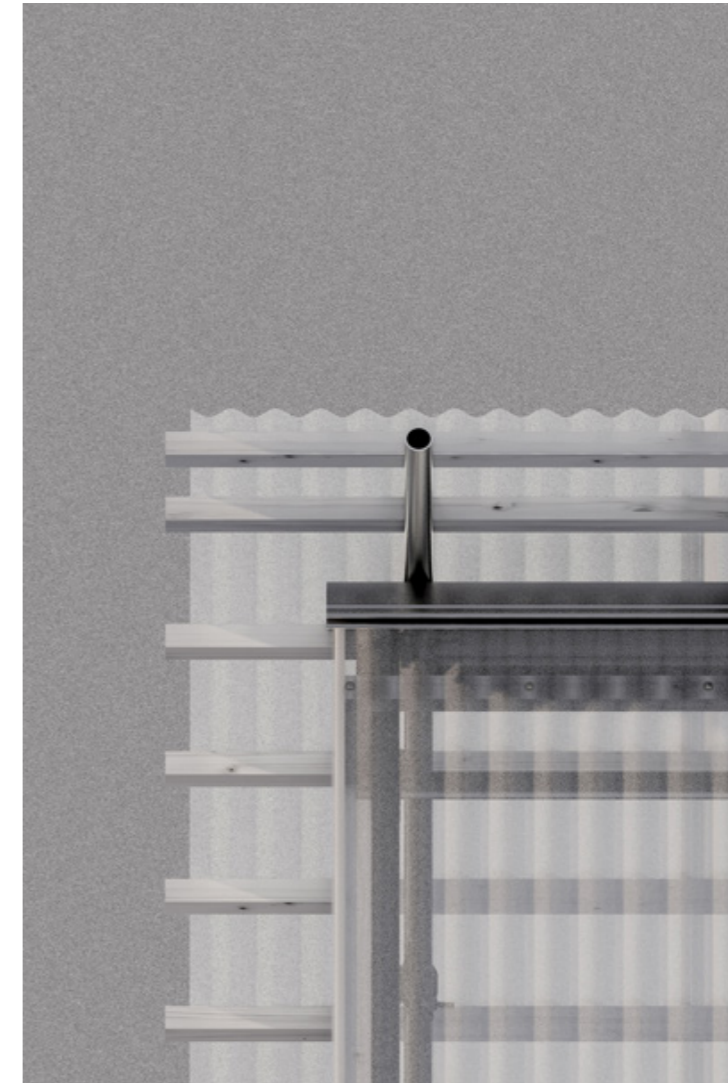




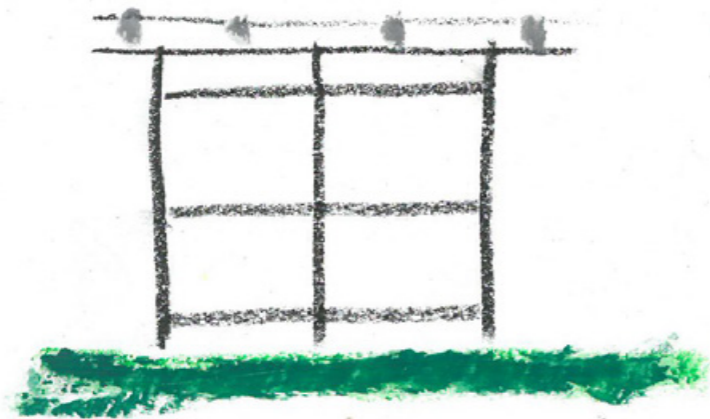












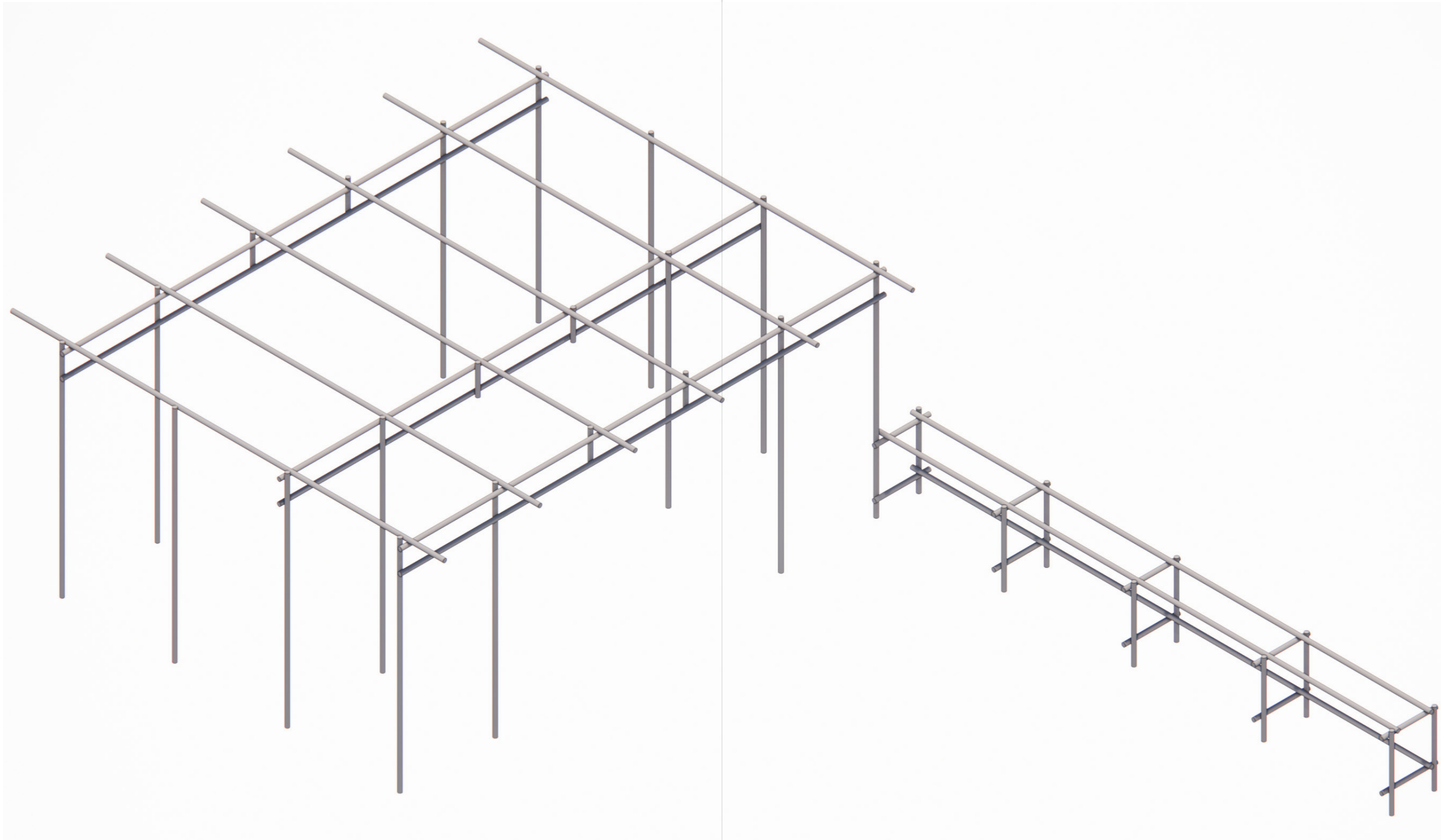




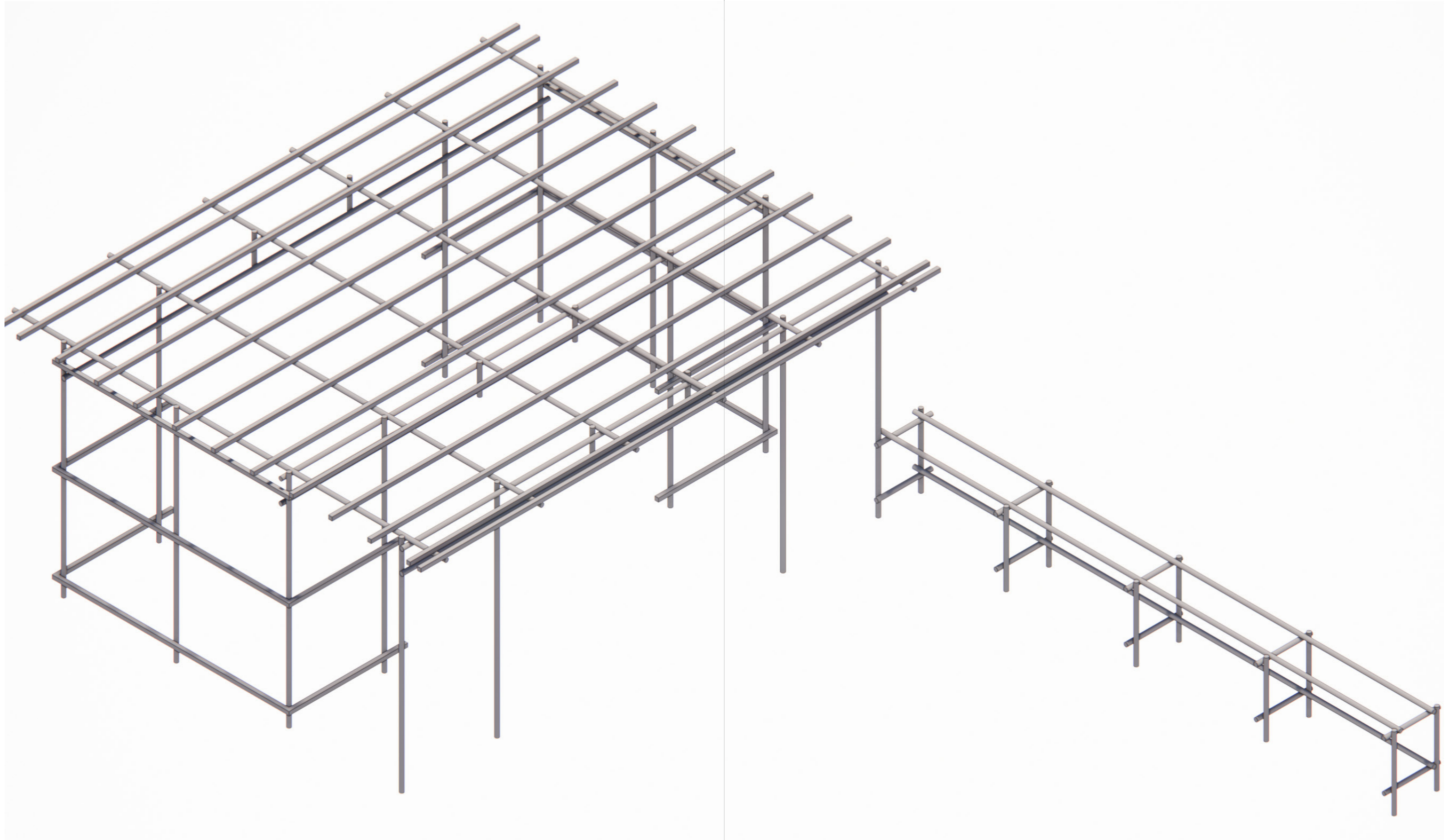




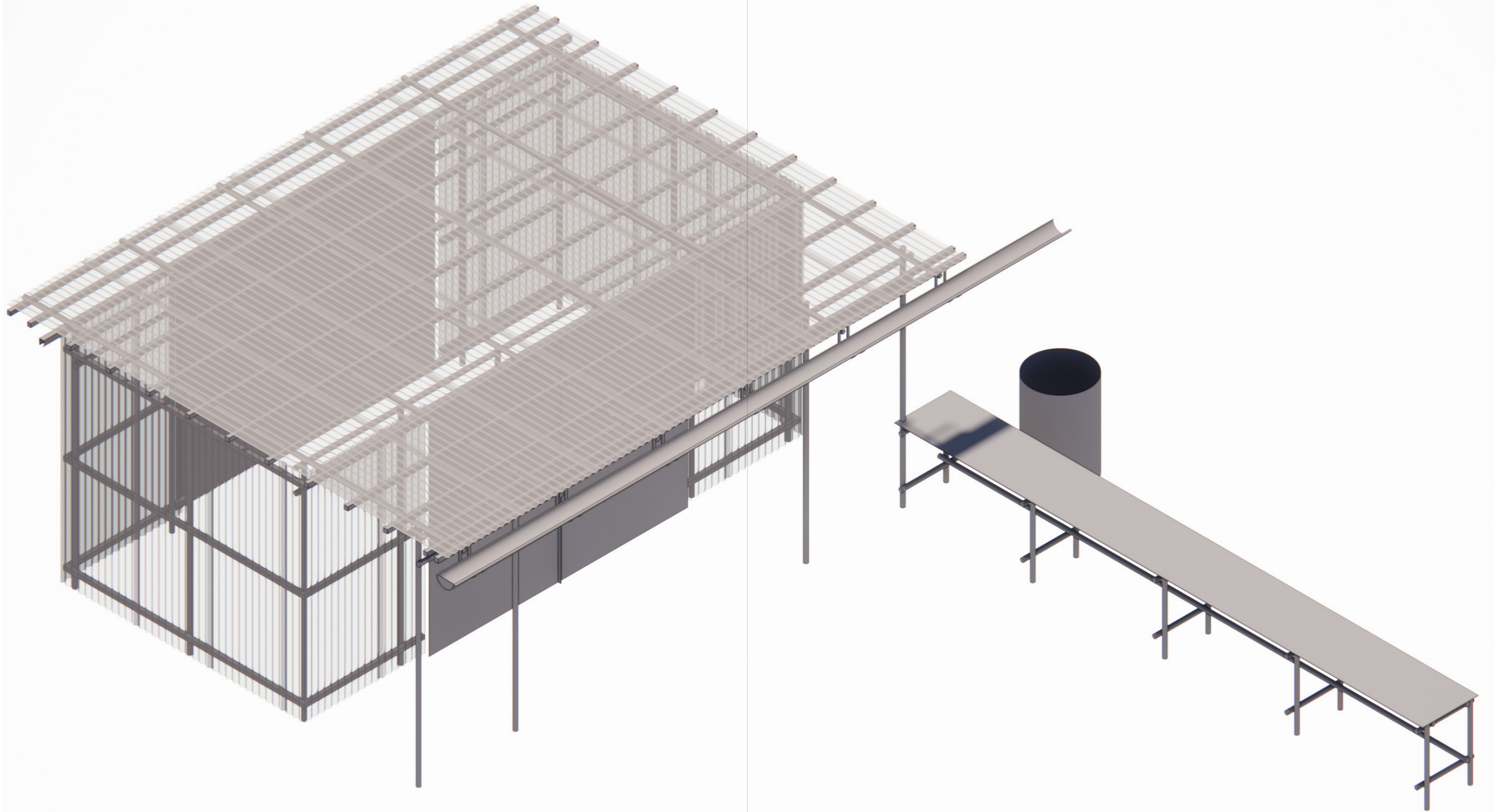




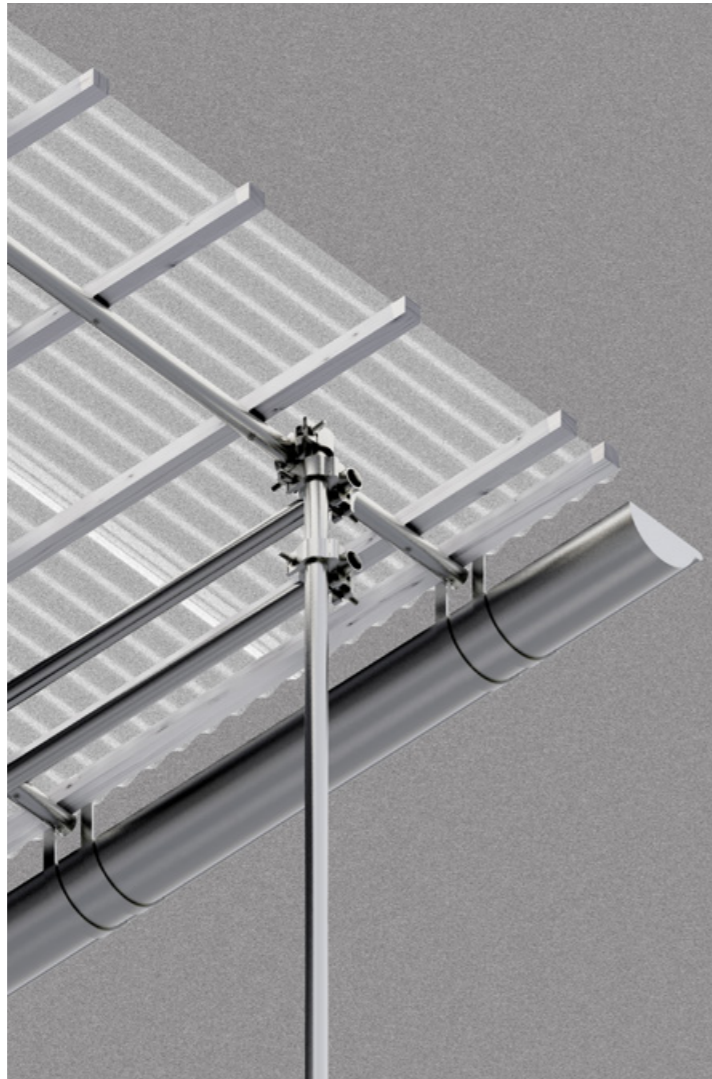


















## #003 BUNKER 319

**location:** bungenäs, gotland **architecture:** skålsö arkitekter: building permit, ateljé ö: construction drawings & execution **project:** 2018 - 2021 **photography:** martin brusewitz, andy liffner, by architects **publications:** amag, residence, maja

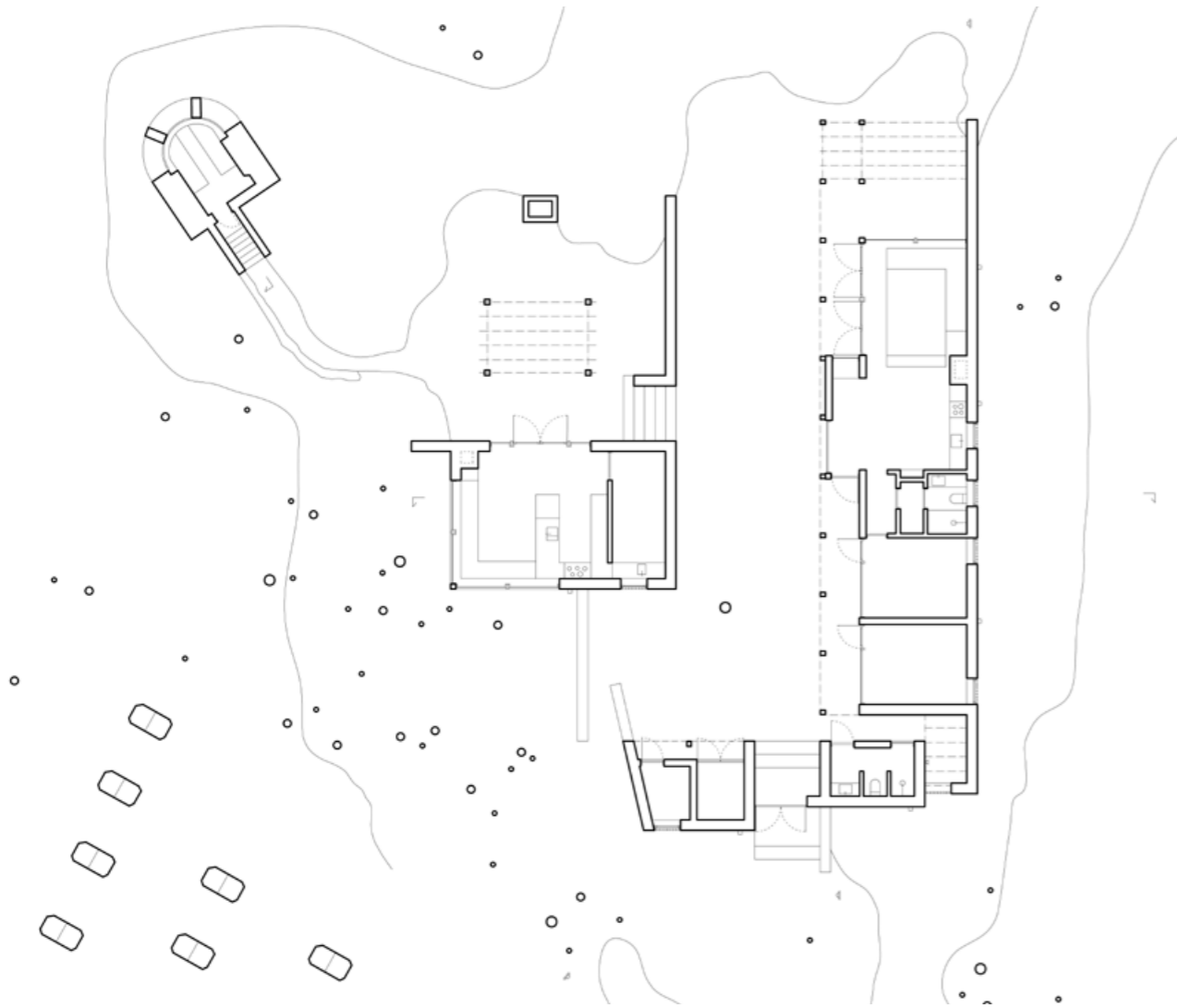


BUNKER 319 IS BUILT ON THE REMAINS OF MILITARY ACTIVITIES ON THE SWEDISH ISLAND GOTLAND. IT CONSISTS OF FOUR LOW HOUSES DEVELOPED AROUND AN ACTUAL COLD WAR BUNKER AND SITS LIKE A HIDDEN NEST SUNKEN INTO THE VERY GROUND OF A 20 METER TALL HILL, OVERLOOKING THE BALTIC SEA. THE WORK OF CONVERTING THE BUNKER AND CREATING NEW SPACES HAS TRANSFORMED THE SITE FROM A STONY LEFTOVER OF SOMETHING THAT ONCE WAS INTO A DREAMY ISLAND SUMMER OASIS, WITHOUT COMPLETELY LETTING GO OF HISTORY.

THE ADDITION TOGETHER WITH THE ALREADY EXISTING BUNKER FRAMES A TERRACED EXTERIOR SPACE CREATING A COURTYARD ON THE PREMISES. IN THE MIDDLE OF IT A LONELY TREE GROWS, GIVING THE SPACE THE RESEMBLANCE OF A TINY SQUARE IN A SMALL VILLAGE. THE FLAT ROOFS OF THE HOUSES ARE COVERED BY THE CHARACTERISTIC GRAVEL FOUND ALL AROUND THE SITE. THE PLACE WAS ONCE, BEFORE THE MILITARY ARRIVED, ONE OF GOTLANDS BIGGEST AND MOST FLOURISHING LIMESTONE QUARRIES.

ENCOMPASSED BY NATURE, THE GOTLAND SUN SHINING BRIGHT OVER IT DURING THE DAY, RIGHT UNDER THE MOON AT NIGHT. THE FAÇADE WITH ITS CUSTOM-RENDERED SURFACE AND RAW WOODEN PILLARS SITS NICELY NEXT TO LOW PINE TREES AND THE DESATURATED PALETTE OF THE SURROUNDINGS. THE GRAY TONE OF THE LANDSCAPE CONTINUES INTO THE HOUSE WHERE CAREFULLY PLACED CHUNKS OF LOCAL STONE ARE CASTED INTO THE CONCRETE FLOOR. GOLDEN PINE CLADDED WALLS DEFINE THE ATMOSPHERE OF THE INTERIOR. THE SHAPE OF THE PLAN PLAYS FREELY UNDER THE PERFECT RECTANGULAR ROOFS. THE PROGRAM IS SPREAD ACROSS THE SITE AND THE DESIGN OF THE GAP-SPACES INTERWEAVE NEW WITH OLD, OUTDOOR WITH INDOOR AND THE NATURE WITH THE BUILT.





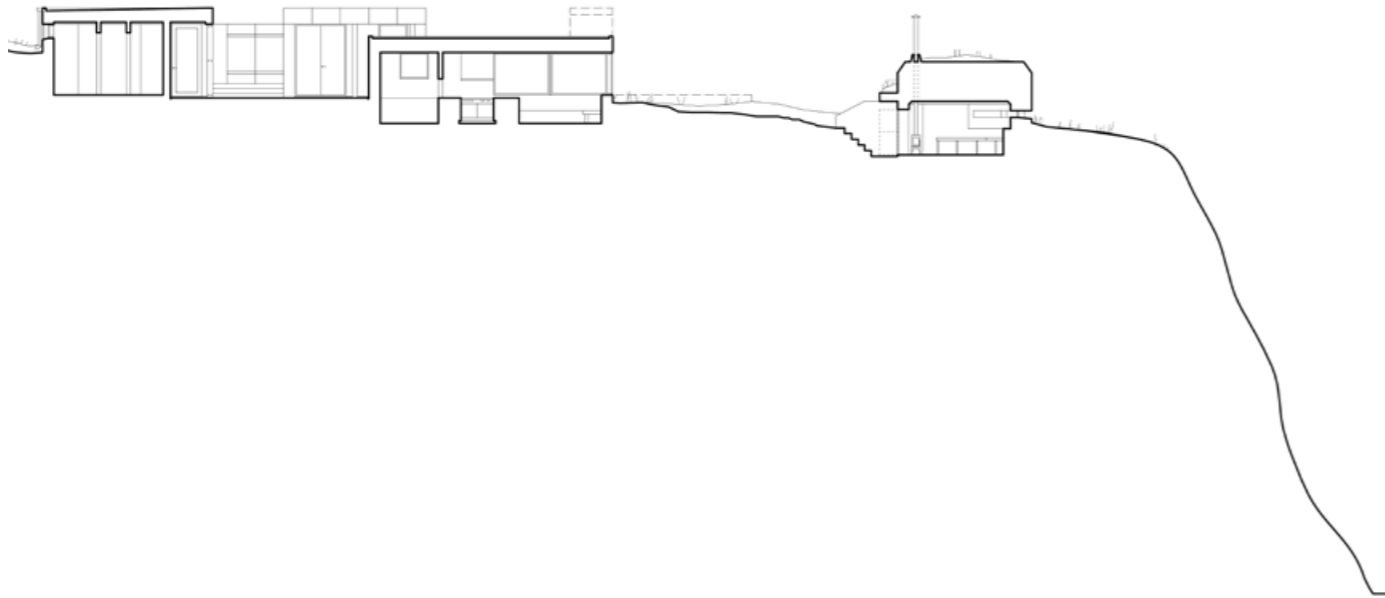








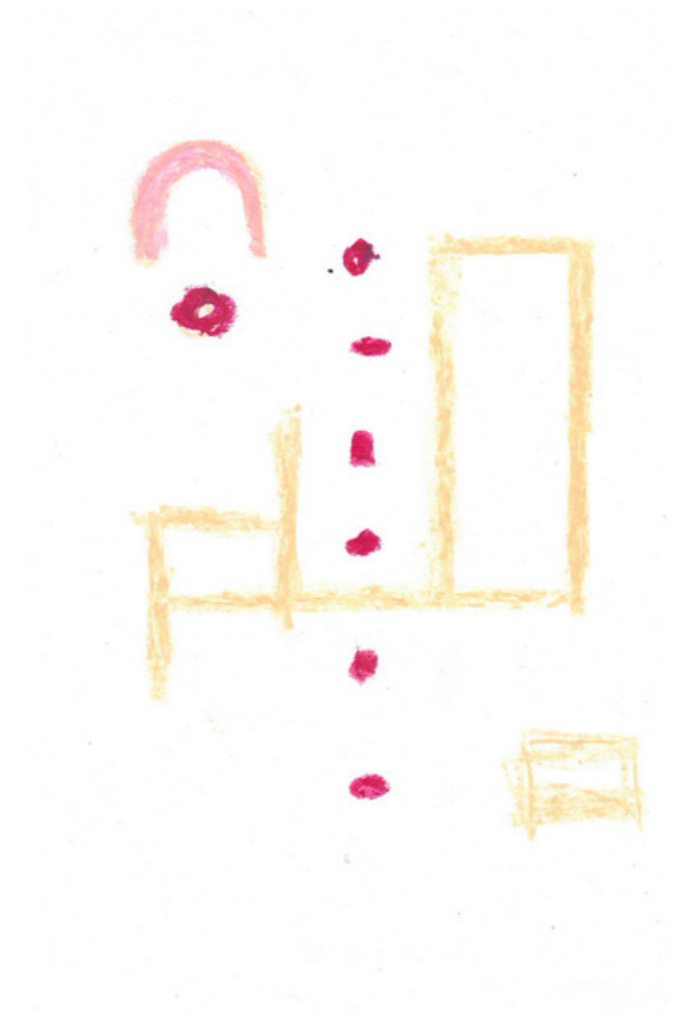








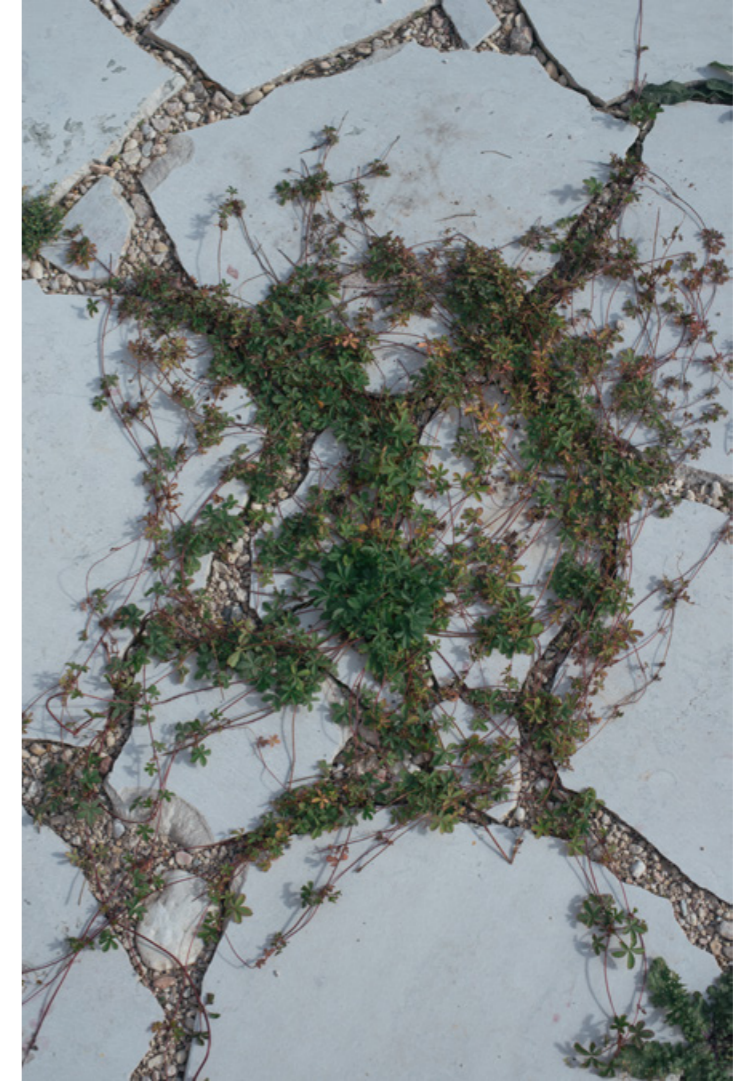




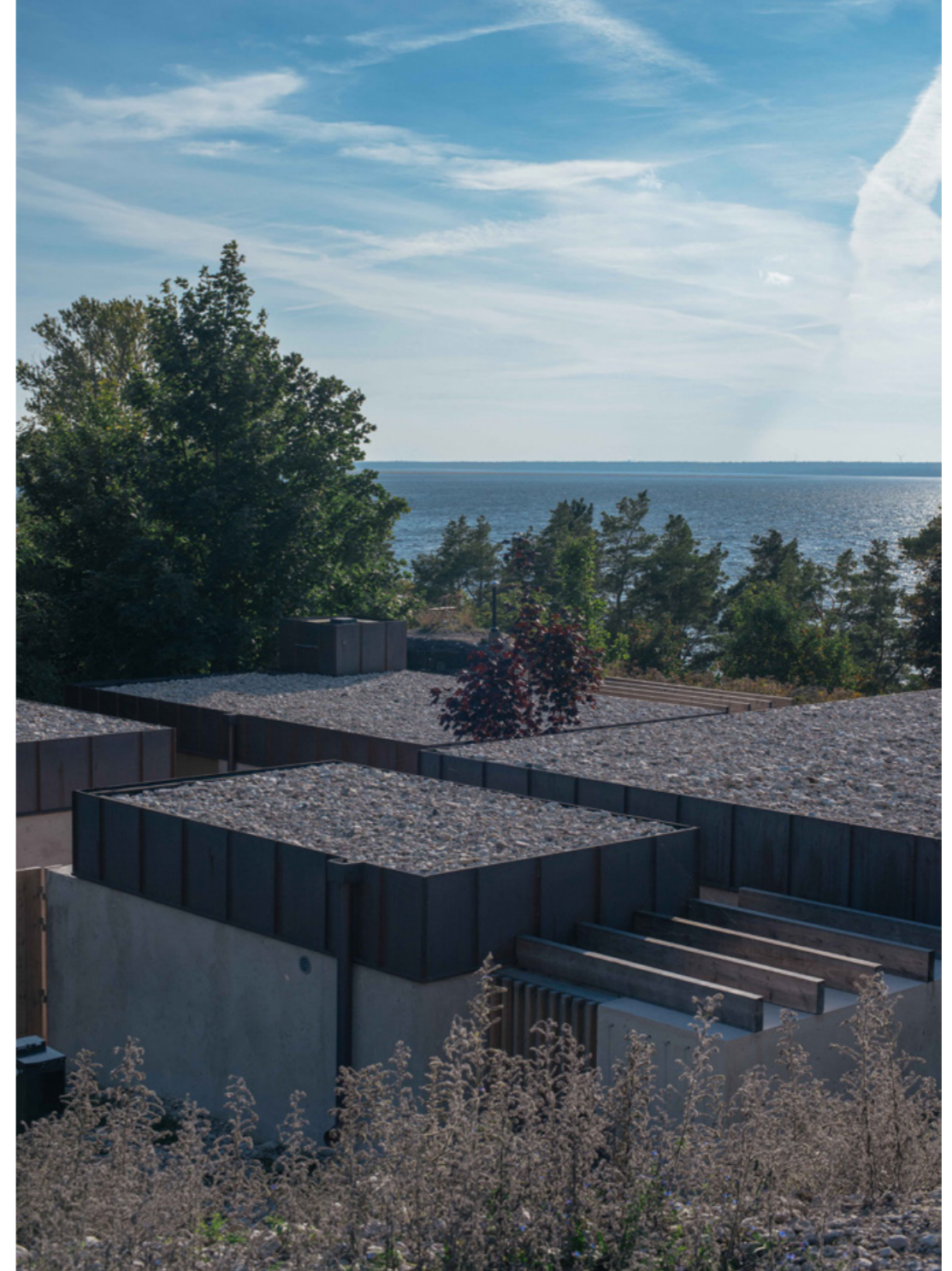


















## #004 DJUPVIKE



**location:** östergarn, gotland **architecture:** skälsö arkitekter: building permit, ateljé ö: construction drawings & execution **project:** 2017 - 2021 **photography:** martin brusewitz, by client, by architects **publications:** amag

ATELJÉ DJUPVIKE IS AN ARTIST'S VISION OF A COMBINED HOME AND STUDIO DESIGNED AND BROUGHT TO LIFE BY ATELJÉ Ö. IT IS AN EXTREMELY THOUGHT-THROUGH HOUSE THAT WAS THOROUGHLY FORMED IN A SEVERAL YEARS LONG COLLABORATION BETWEEN ARCHITECT AND CLIENT ALONG WITH A NUMBER OF ARTISANS AND ARTISTS (ALL FRIENDS AND COLLEAGUES OF THE CLIENT). THE SMALL COMPOUND – THE ESTATE CONSISTS OF FIVE DIFFERENT STRUCTURES INCLUDING A ROOT CELLAR – SITS ON A WILD, FLOWER CLAD FIELD BY A ROCKY COVE ON THE EAST COAST OF GOTLAND. THE AIR IS FILLED BY THE SOFT SMELL OF THE SEA AND WHEN THE SUN RISES OUT OF THE OCEAN IT MAKES THE HOUSE SHINE BRIGHT LIKE A DIAMOND IN THE HILLY LANDSCAPE.

THE SINGLE STORY BUILDINGS HAVE AN OBVIOUS HORIZONTALITY WITH ITS FLAT ROOFS AND THE ENTIRE ENSEMBLE FRAMED BY LOW STONE WALLS DRAWING LINES IN THE LANDSCAPE. THE SITE WAS HOME TO THE REMAINS OF AN OLD FARM AND THE NEW BUILDINGS WERE ERECTED FOLLOWING THAT FARM'S LAYOUT. IN THAT WAY THE ORIENTATION AND SPATIAL RELATIONS OF THE NEW HOUSES ANCHORS THE PROJECT WITH THE HISTORY OF THE PLACE. THE HOUSE IS A SOPHISTICATED, CALM CREATION WITH PLAYFUL FEATURES, A BATHROOM IS DRESSED IN PINK APRICOT MARBLE TERRAZZO AND A BEDROOM CEILING IS FILLED BY A BIG, BLUE PAINTING OF VINES, MONKEYS AND BIRDS. HUGE FLOOR TO CEILING WINDOWS OPEN THE MAIN HOUSE UP TOWARDS THE BALTIC SEA.

THE HOUSE IS A SOPHISTICATED, CALM CREATION WITH PLAYFUL FEATURES, A BATHROOM IS DRESSED IN PINK APRICOT MARBLE TERRAZZO AND A BEDROOM CEILING IS FILLED BY A BIG, BLUE PAINTING OF VINES, MONKEYS AND BIRDS. HUGE FLOOR TO CEILING WINDOWS OPEN THE MAIN HOUSE UP TOWARDS THE BALTIC SEA. THE MOVEMENT OF THE WATER, THE SMALL ISLAND ON THE HORIZON AND THE ELEMENTS CREATES A SERENE BUT EVER CHANGING VIEW. A COMBINATION OF CONCRETE, CAREFULLY TREATED PINE WOOD INSPIRED BY THE SURROUNDING LANDSCAPE AND PLASTER MAKES A TRANQUIL INSIDE OF THE HOUSES. THE WALLS OF THE PROJECT, INSIDE AS WELL AS OUTSIDE, MIRROR THE COLORS OF THE SUN BURNT FIELD THAT LIES BETWEEN THE HOUSE AND THE OCEAN.













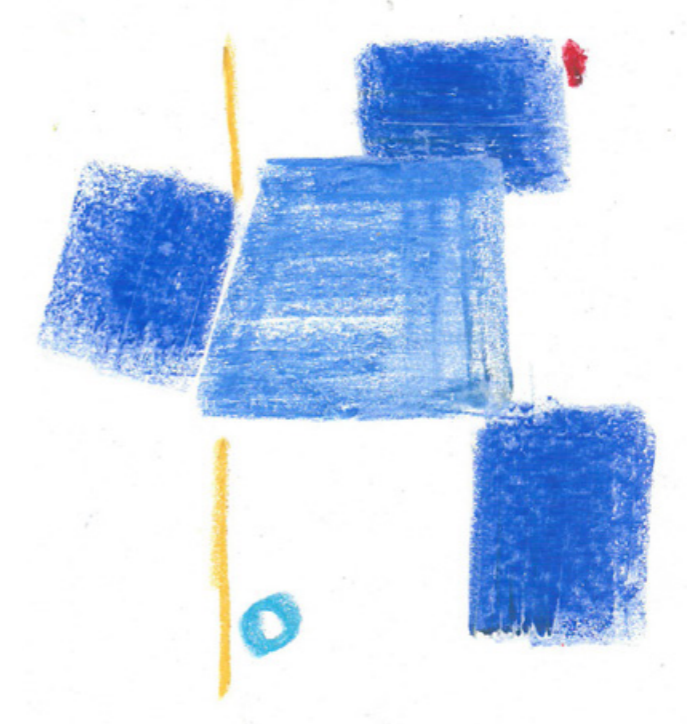
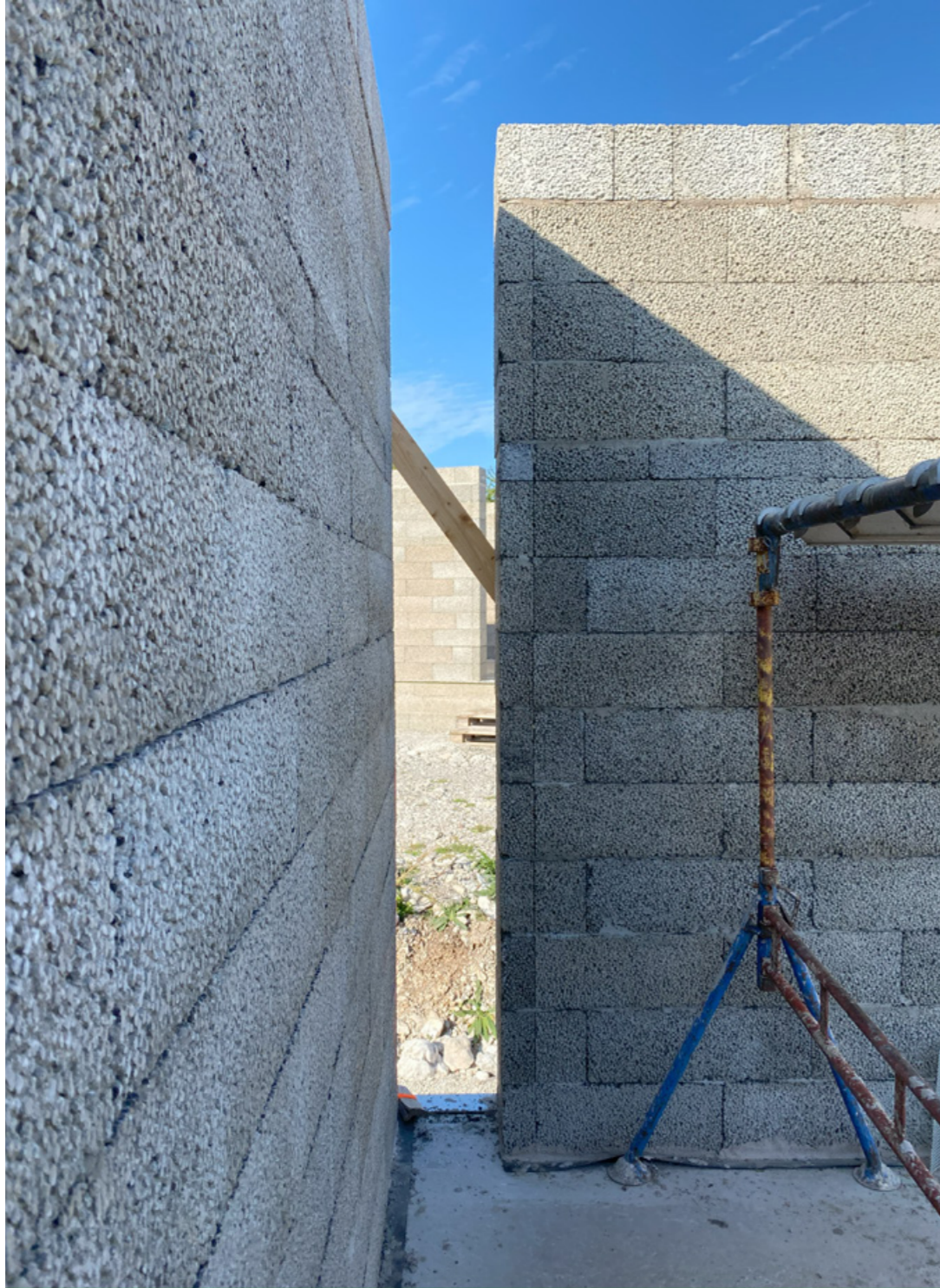








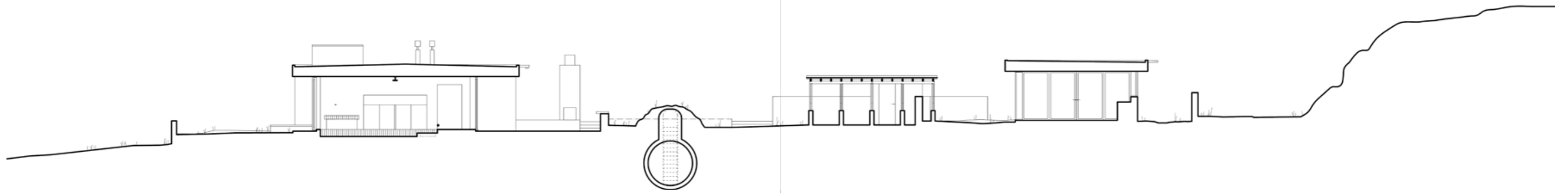
















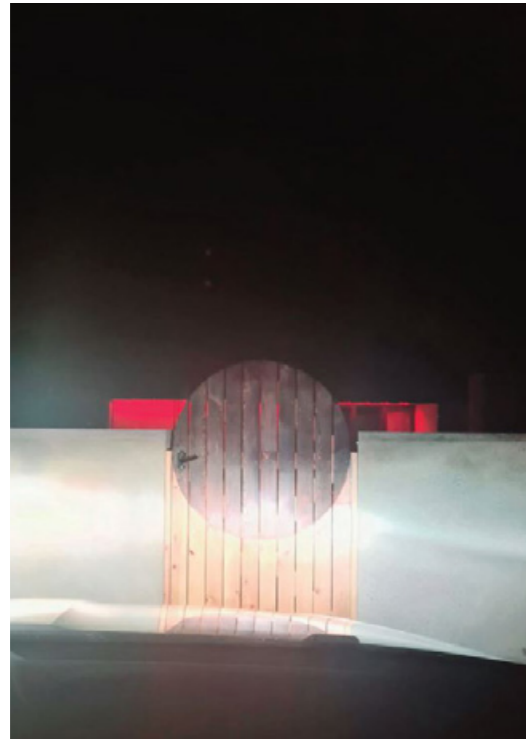


















## #001 VILLA BUTTER



**location:** väskinde, gotland **architects:** skålsö arkitekter: building permit, ateljé ö: construction drawings & execution **project:** 2017 - 2022 **photography:** erik lefvander, martin brusewitz, by architects **publications:** amag, the new era

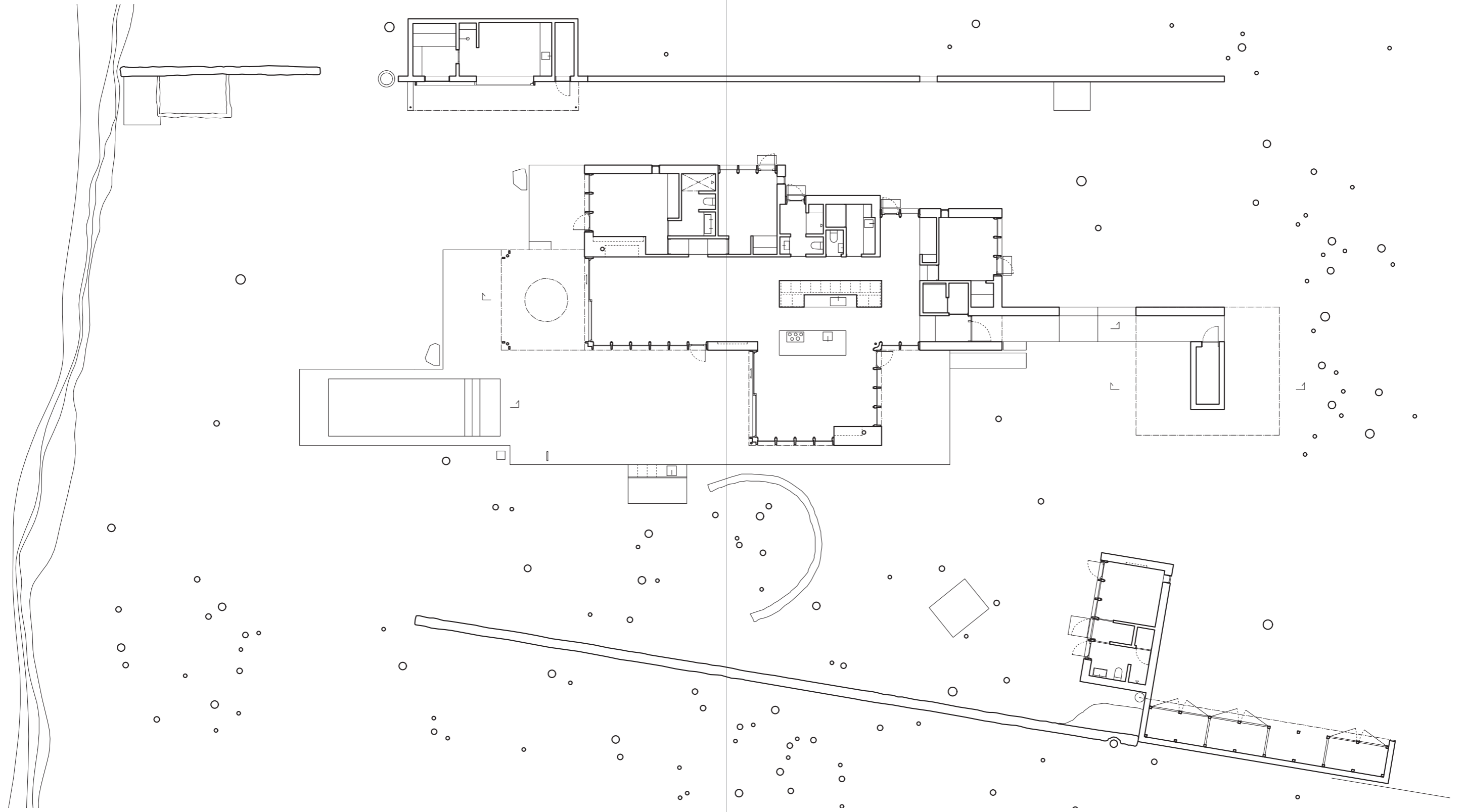
WHAT FIRST CATCHES THE VISITOR'S EYE WHEN ARRIVING AT THE HEAVY STRUCTURE VILLA BUTTER IS THE SPECTACULAR VIEW. THE PROJECT SITS RIGHT ON THE EDGE OF A 20 METER CLIFF OVERLOOKING THE OCEAN. BUT MORE VITAL TO HOW THE PROJECT WAS DESIGNED AND PLANNED WAS ACTUALLY THE BEAUTIFUL GROVE THE HOUSE SITS IN. THE SUN PLAYING THROUGH THE GREENERY, THE SCENT OF ELDERFLOWER, THE PINES PERFECT IN THEIR IMPERFECTION AND THE GROUND AND TREE TRUNKS COVERED IN IVY... LIKE AN ENCHANTED FOREST. IN VILLA BUTTER THE LINES BETWEEN OUTSIDE AND INSIDE ARE BLURRED, MAKING THE INTERIOR OF THE HOUSE A TAMED PART OF THE LUSHNESS OUTSIDE. AND THAT TO THE CHARACTER OF THE HOUSE, SOUL IF YOU MAY, IS WAY MORE DEFINING THAN THE BREATHTAKING VIEW.

THE MATERIALS USED ARE OAK, CONCRETE, GLASS AND COPPER. A LOT OF WORK WAS PUT INTO FINDING THE PERFECT CEMENT RENDER AND APPLICATION TECHNIQUE TO ACHIEVE THE RIGHT TEXTURE FOR THE FACADE. THE PROJECT IS DESIGNED WITH A VERY OBVIOUS RHYTHM. AT THE SAME TIME THE PLAN OF THE HOUSE IS SPRUNG FROM THE PROGRAM AND NOT THE OPPOSITE, LEADING TO THE STRUCTURES OF THE PROJECT BEING NOT RECTANGULAR BUT EXTENDED AND FORMED AFTER THE FUNCTIONS THEY HOLD.

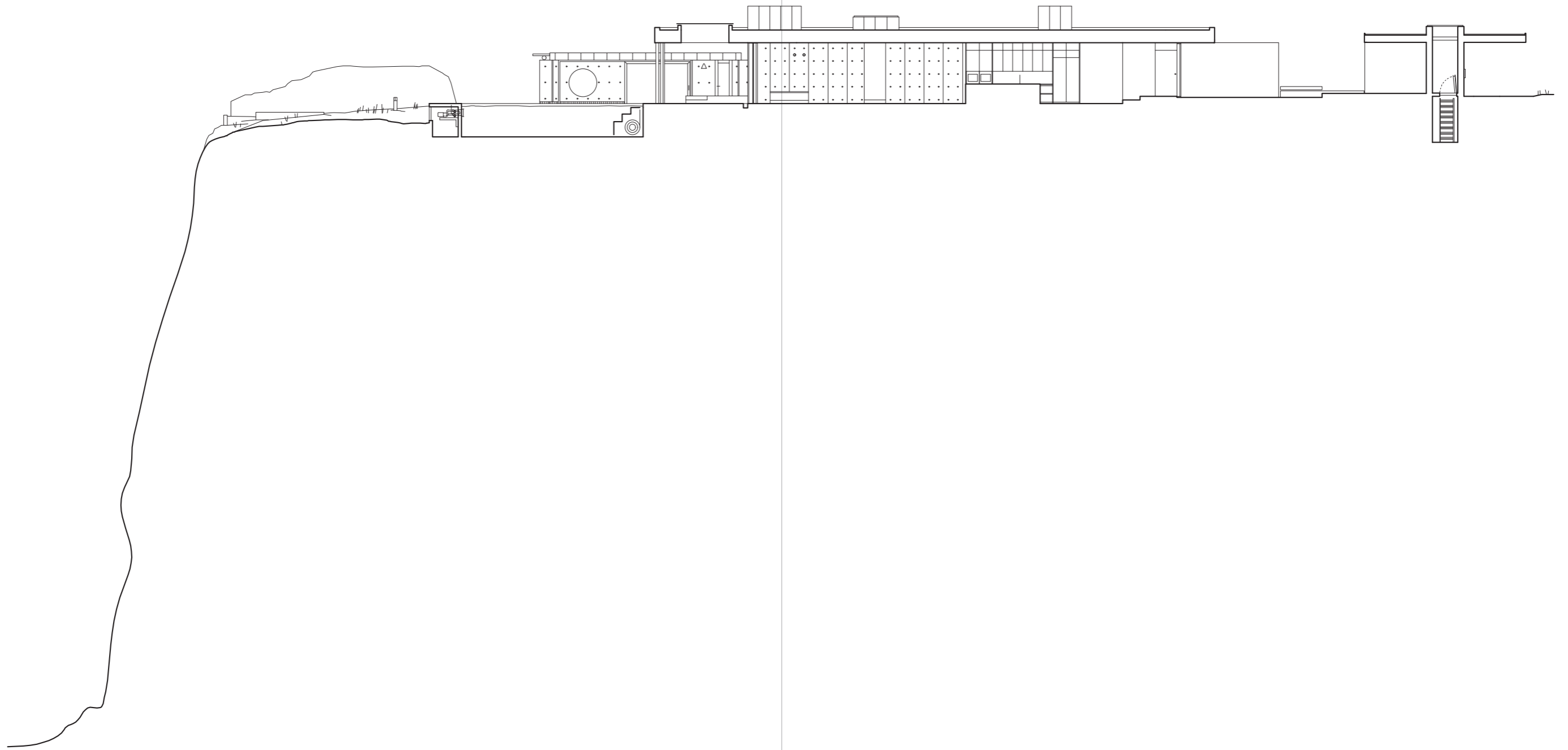
IN MORE WAYS THAN ONE VILLA BUTTER IS ABOUT CONNECTEDNESS. ON THE SITE STOOD OLD RUINS FROM FORMER STRUCTURES, FOR EXAMPLE AN OLD STONE WALL. YESTERDAY IS OVER, IT'S A DIFFERENT DAY. VILLA BUTTERS' ELEGANT AND MODERN SHAPE TALKS TO TOMORROW, BUT THE OLD WALLS HAVE BEEN KEPT AS A WAY TO CONNECT ALSO TO YESTERDAY. THE PROJECT IS A MASSIVE, HEAVY STRUCTURE WITH A VERY SERIOUS CHARACTER BUT IT ALSO HAS SURPRISING, PLAYFUL ELEMENTS SUCH AS VARNISHED, DEEP BLUE ELEMENTS BREAKING UP THE PERFECTION.

VILLA BUTTER IS A GRAND PROJECT BUT WITH A HUMBLE PERSONA.





















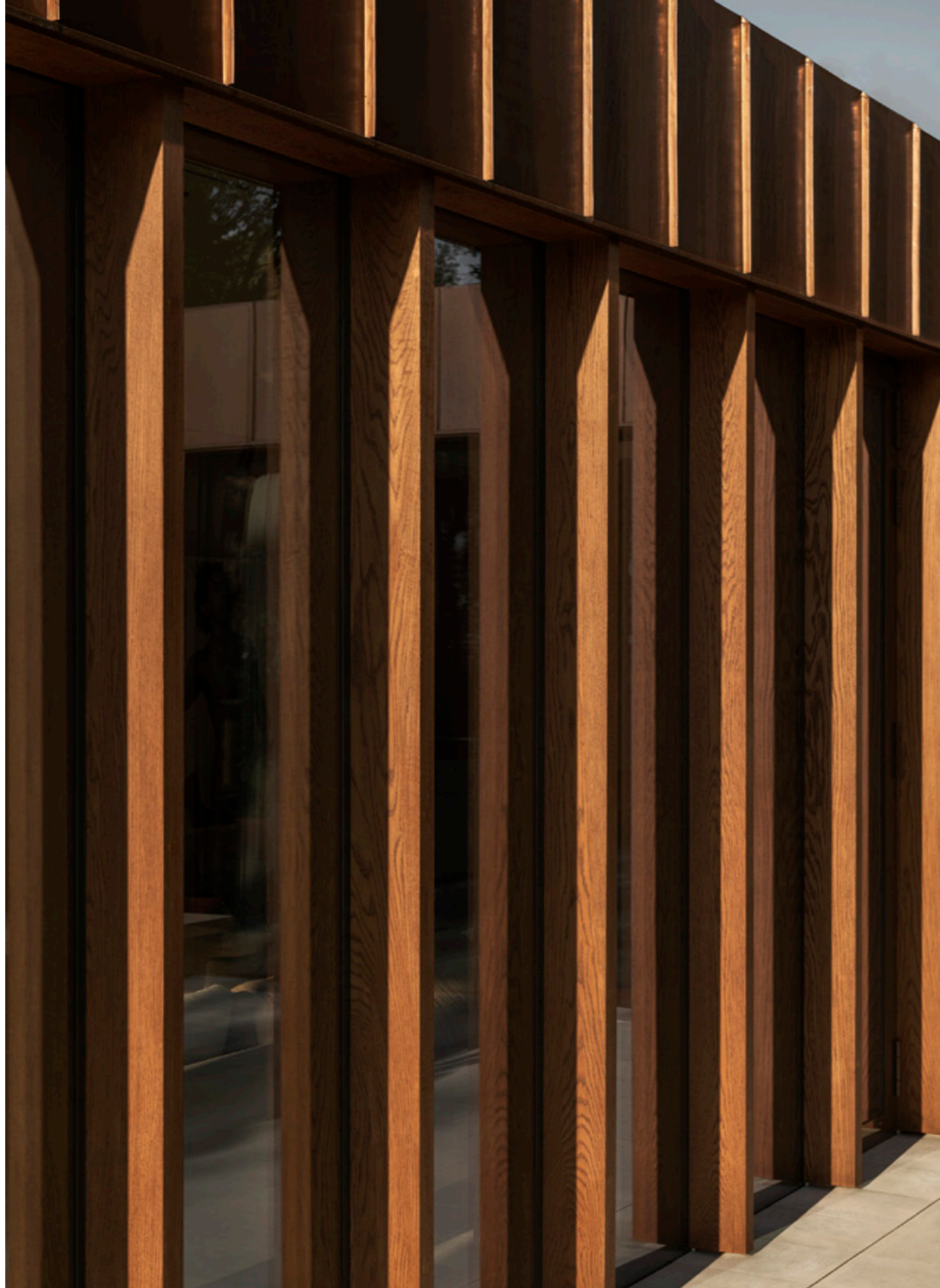


































## #034 SAHARA



**location:** bunganäs, gotland **architects:** ateljé ö: building permit, construction drawings & execution **project:** 2020-2022

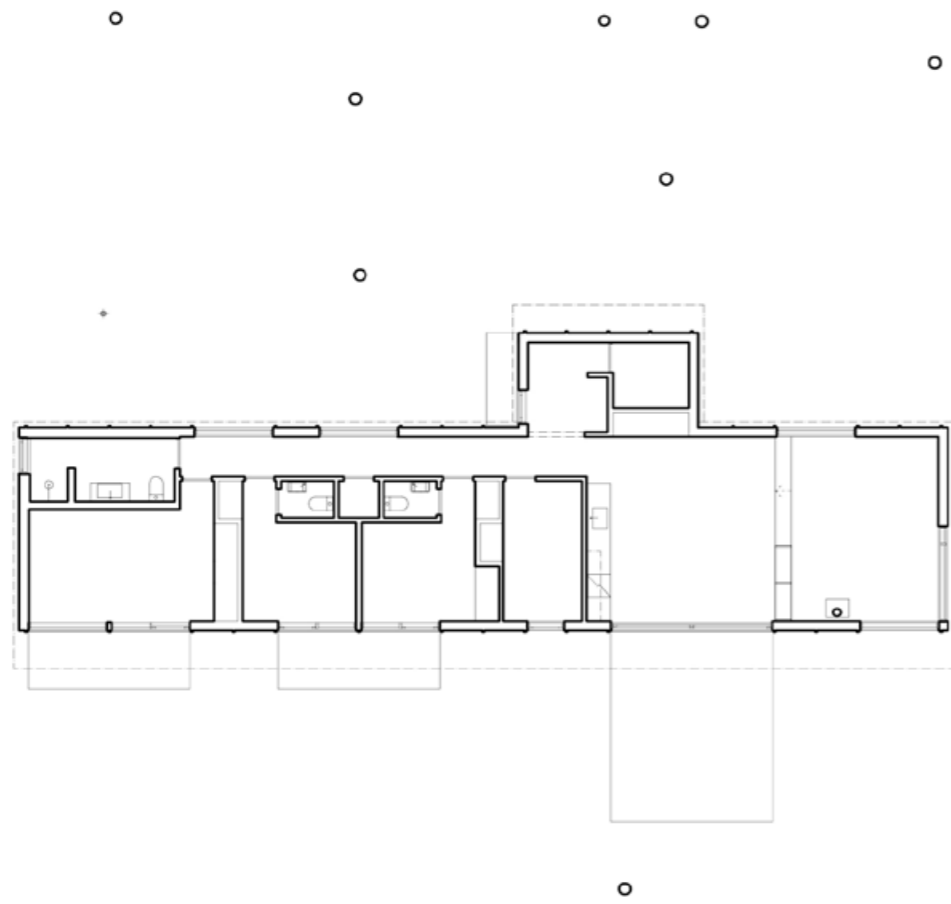
#### A SUMMER COTTAGE IN THE FOREST GLADE

BUILT FROM LOCAL MATERIALS, BY LOCAL ARTISANS THE HOUSE AMONGST THE PINES STRIKES YOU AS A SIMPLE BUT YET SOPHISTICATED BUILDING. UPON ARRIVAL, THE HOUSE STANDING ON LIGHT STILTS, SEEMINGLY FLOATS OVER THE FOREST FLOOR OVERGROWN WITH FERN, LEAVING ONLY A MINIMAL FOOTPRINT.

A CLEAR RHYTHM FRAMES THE FUNCTIONS, DIVIDES THE ROOMS AND HOUSES WINDOWS AND DOORS. THE STRUCTURE IS REFLECTED BOTH ON THE INTERIOR AND THE EXTERIOR.

LIKE A WOODEN PAVILION THE COTTAGE IS BUILT IN THE THRESHOLD BETWEEN FOREST AND THE SEA. THE BALTIC SEA IS EVER PRESENT IN SOUND AND SMELL AND REMINDS US THAT WE ARE ON AN ISLAND. BUT STILL SO IT'S THE LIVELY SHADOW PLAY CAUSED BY THE SURROUNDING TREES PROJECTED ON THE NAKED PINE FACADE THAT LEAVES THE STRONGEST IMPRESSION ON THE VISITOR.



















## #005 CLIFFHOUSE



**location:** visby, gotland **architects:** skälsö arkitekter: building permit, ateljé ö: construction drawings & execution **project:** 2018 - 2021 **photography:** martin brusewitz, by architects

CLIFFHOUSE VISBY IS A JOINT PROJECT TOGETHER WITH AMSTERDAM BASED CREATIVE STUDIO, STUDIO FROM. ATELJÉ Ö DESIGNED AND OVERSAW A COMPLETE RENOVATION OF A LARGE 1930'S STONE HOUSE RIGHT IN THE MEDIEVAL TOWN CENTER OF VISBY, GOTLAND, A WORLD HERITAGE SITE. IT'S SITUATED ON A HILLSIDE WITH INCREDIBLE VIEWS OVER THE IRREGULAR ROOFTOPS, THE TOWNS 1000 YEAR OLD RUINS, THE HARBOR AND THE GOTLAND SUNSETS.

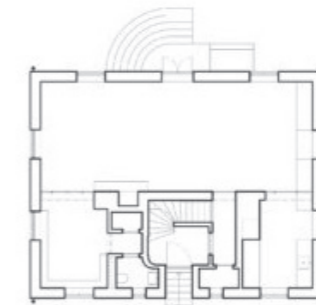
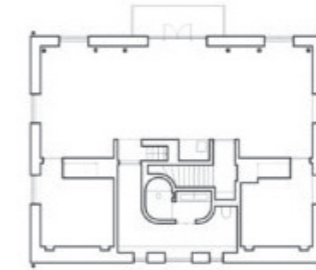
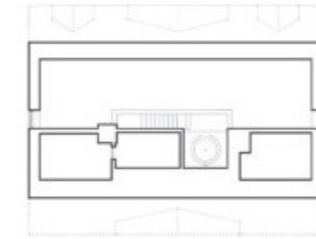
THE GOAL OF THE PROJECT WAS TO DESIGN A PERSONAL, BEAUTIFUL AND COZY HOME FOR THE OWNERS OF STUDIO FROM. FOR IT TO BE LIVABLE WAS OF THE ESSENCE. THE OUTSIDE OF THE HOUSE WAS REDONE BUT KEPT VERY CLOSE TO ITS ORIGINAL SELF; A BUILDING IMPRESSIVE IN SIZE AND HUMBLE IN ITS EXPRESSION. THE INTERIOR WAS DONE IN THE OPPOSITE WAY; PLAYFULLY DETAILED TO IMMEDIATELY SURPRISE VISITORS AND TO AWAKEN CURIOSITY AND THE DESIRE TO EXPLORE.

THE HOUSE WAS GUTTED AND A METICULOUS REDOING OF THE ENTIRE INTERIOR FOLLOWED. THE COLORS OF THE HOUSE ARE BRIGHT WOOD, COBALT BLUE AND A BROAD PALETTE OF RED TONES ON THE BACKDROP OF A CALM, PURE WHITE. IT IS A SOPHISTICATED BUT ALSO FUN HOUSE CHARACTERIZED BY ITS BEAUTIFUL CRAFTSMANSHIP AND SOMETIMES SURPRISING DETAILS AND FEATURES. SUCH AS THE DEEP BLUE BATHTUB SITTING IN A BALCONY LIKE SETTING OVER THE TOP FLOOR LIVING ROOM RIGHT UNDER THE CEILING. THE CUSTOM MADE DOORS WITH ARCH LIKE DECORATIONS MIRRORING THE DESIGNS OF THE ANCIENT RUINS OF THE CITY. OR THE MALLORCAN TILE CLAD FIREPLACE THAT WITHOUT MAKING MUCH NOISE STILL MANAGES TO BE THE CENTERPIECE OF THE LIVING ROOM.

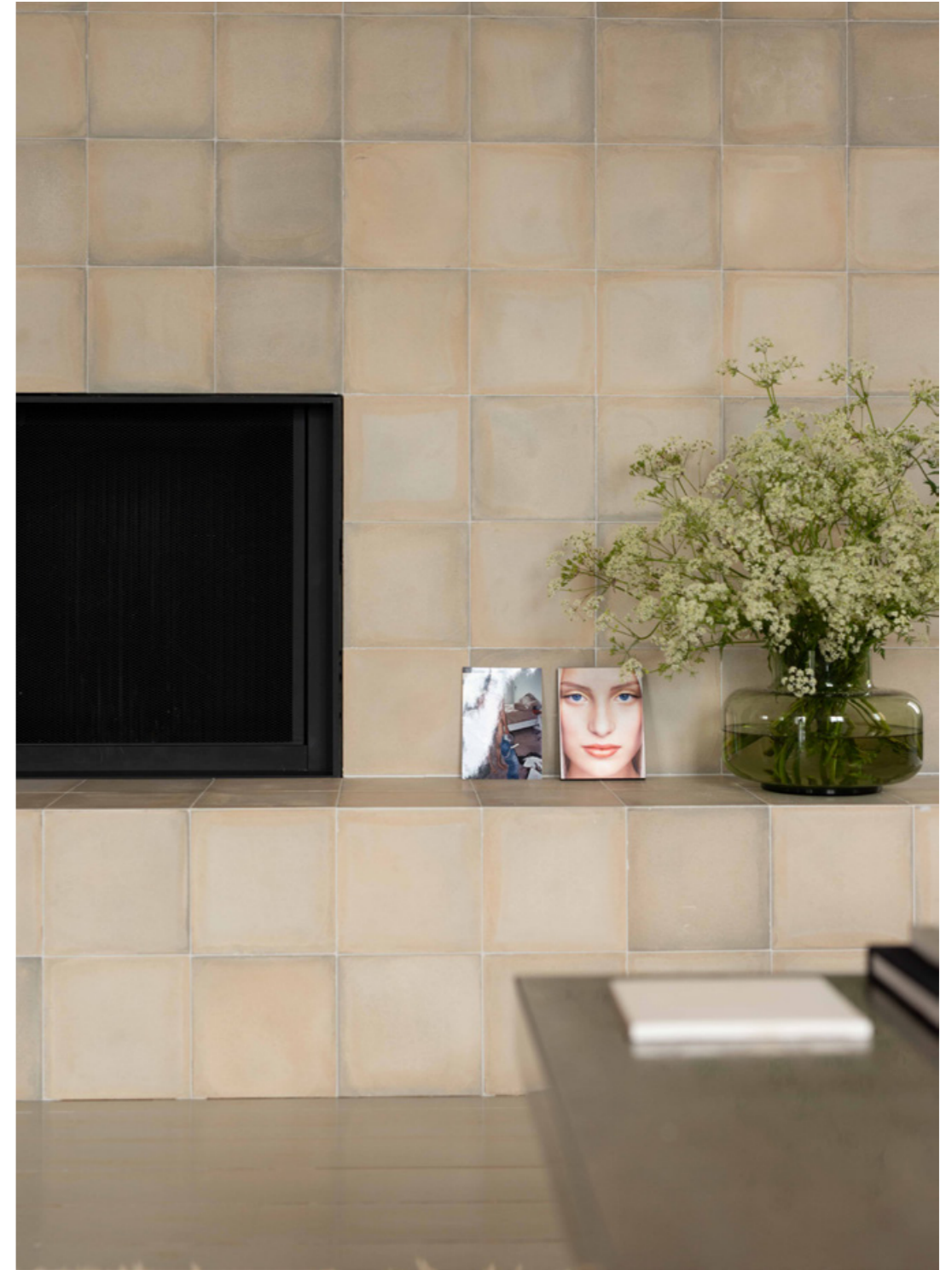
THE TWO MAIN FLOORS ARE DOMINATED BY OPEN, LARGE SPACES AND THE FIVE COMPACT BEDROOMS ARE STACKED AWAY TO BECOME SERENE, SECLUDED PLACES FOR THE SOLE PURPOSE OF SLEEPING AND PRIVACY. THE MASTER BEDROOM IS SITUATED IN THE BASEMENT WITH THE LOGIC OF GIVING IT COMPLETE DARKNESS AND SILENCE.

THE HANDICRAFT PRACTICED DURING THE RENOVATION OF THE HOUSE IS FAR BEYOND THE NORMAL. MANY, MANY DESIGN HOURS AND ENORMOUS ATTENTION TO DETAIL HAS BEEN PUT INTO CLIFFHOUSE MAKING IT A PRIME EXAMPLE OF CRAFTSMANSHIP.































#032 HELLVI



**location:** hellvi, gotland **architects:** ateljé ö: building permit, construction drawings & execution **project:** 2020-2022  
**photography:** emma jönsson dysell, by architects

THE HOUSE IN HELLVI SNEAKS INTO THE SMALL FOREST IN NORTHEASTERN GOTLAND WHERE THE ABANDONED LIMESTONE QUARRY LOOMS AMONG THE PINE TREES AND BECOMES A POPULAR BATHING SPOT FOR TOURISTS DURING THE SUMMER. SLITE'S CONCRETE FACTORY WITH ITS GIGANT PIT AND VAST PRODUCTION IS NOT FAR AWAY.

THE HOUSE IS BUILT OF SIMPLE CONCRETE BLOCKS, ALMOST LIKE LEGO; IN THIS WAY, A LEGIBLE ENTIRETY IS CREATED WHERE NOTHING IS HIDDEN OR ASKS FOR APOLOGY. THE CONCRETE BLOCKS ARE USUALLY PLASTERED, BUT THE HOUSE IN HELLVI IS A PROOF THAT IT'S ALSO FINE TO LEAV THEM RAW.

THE MATERIAL BECOMES ONE WITH THE SOURROUNDING BARREN LANDSCAPE. IF IT BECOMES DEFECTIVE, IT SHOWS AND WE WANT TO EMBRACE THAT RAWNESS AND BE HONEST ABOUT IT.













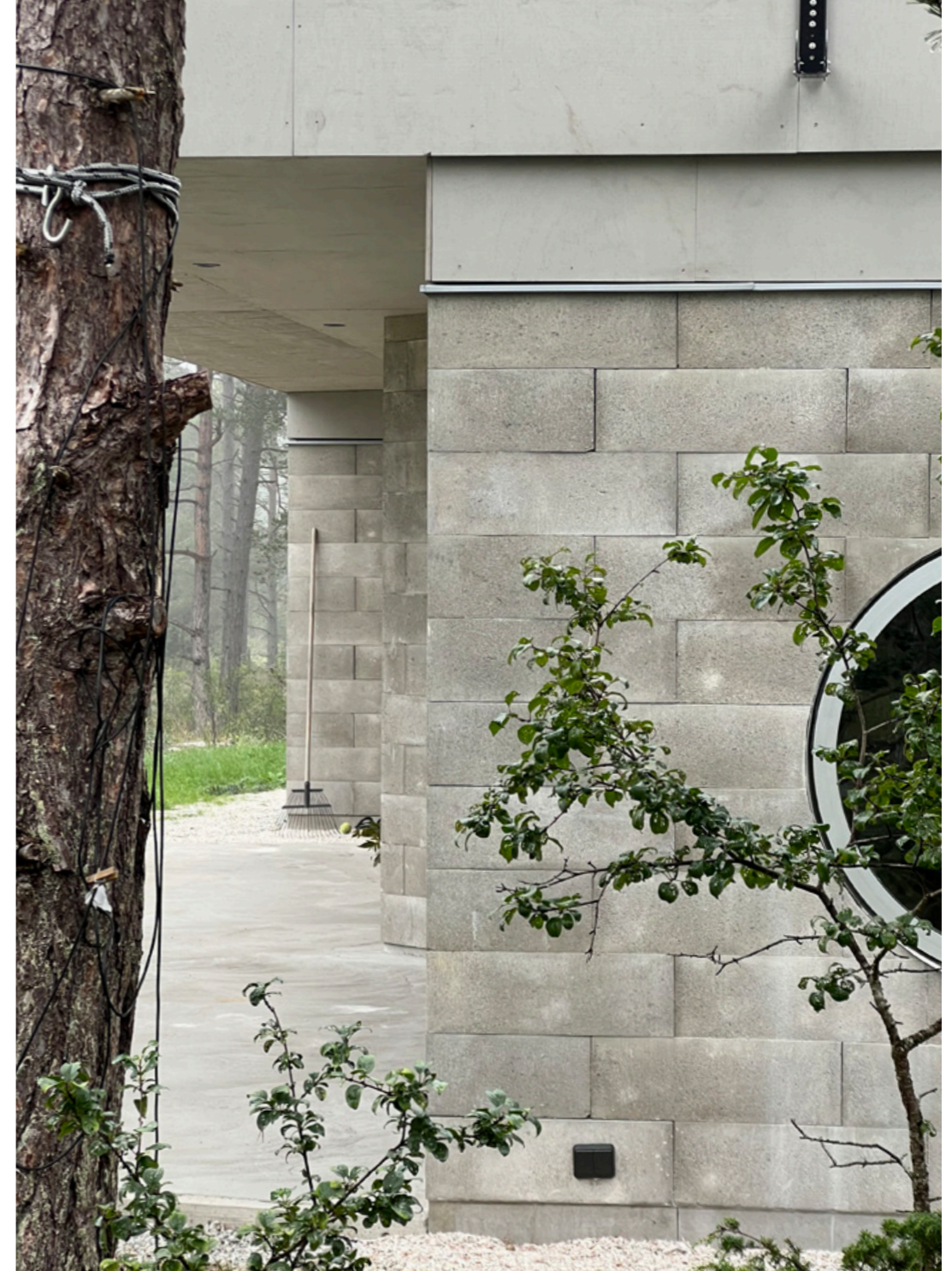






















## #077 CHARLOTTENLUND KIRKE



**location:** charlottenlund, trondheim, norway **architects:** ateljé ö **project year:** winning proposal, competition 2023 - ongoing

THE COMPETITION FOR A NEW CHURCH IN CHARLOTTENLUND, TRONDHEIM, WAS ANNOUNCED IN THE SPRING OF 2023. THE COMPETITION ATTRACTED SIGNIFICANT INTERNATIONAL PARTICIPATION WITH NEARLY 200 SUBMITTED PROPOSALS. AN OPEN TWO-STAGE COMPETITION WAS ANNOUNCED BY THE NORWEGIAN ARCHITECTS ASSOCIATION (NAL) ON BEHALF OF THE TRONDHEIM ECCLESIASTICAL COUNCIL (TRONDHEIMS KIRKELIG FELLESRÅD). IN A SOLEMN CEREMONY LED BY THE BISHOP IN TRONDHEIM'S HISTORIC NIDAROS CATHEDRAL, ATELJÉ Ö WAS ANNOUNCED AS THE WINNER OF THE COMPETITION FOR A NEW CATHEDRAL IN CHARLOTTENLUND.

AS TWO CONGREGATIONS HAD RECENTLY MERGED, THE PURPOSE OF THE COMPETITION WAS TO DEVELOP A PROPOSAL FOR THE DESIGN OF A NEW CHURCH IN THE YET-TO-BE-CONSTRUCTED RESIDENTIAL AREA OF CHARLOTTENLUND IN THE EASTERN PARTS OF THE CITY. THE TASK, IN ADDITION TO DESIGNING THE CHURCH SPACE AND ADJACENT PARISH FACILITIES, ALSO INCLUDED DESIGNING THE SURROUNDING CHURCH GARDEN.

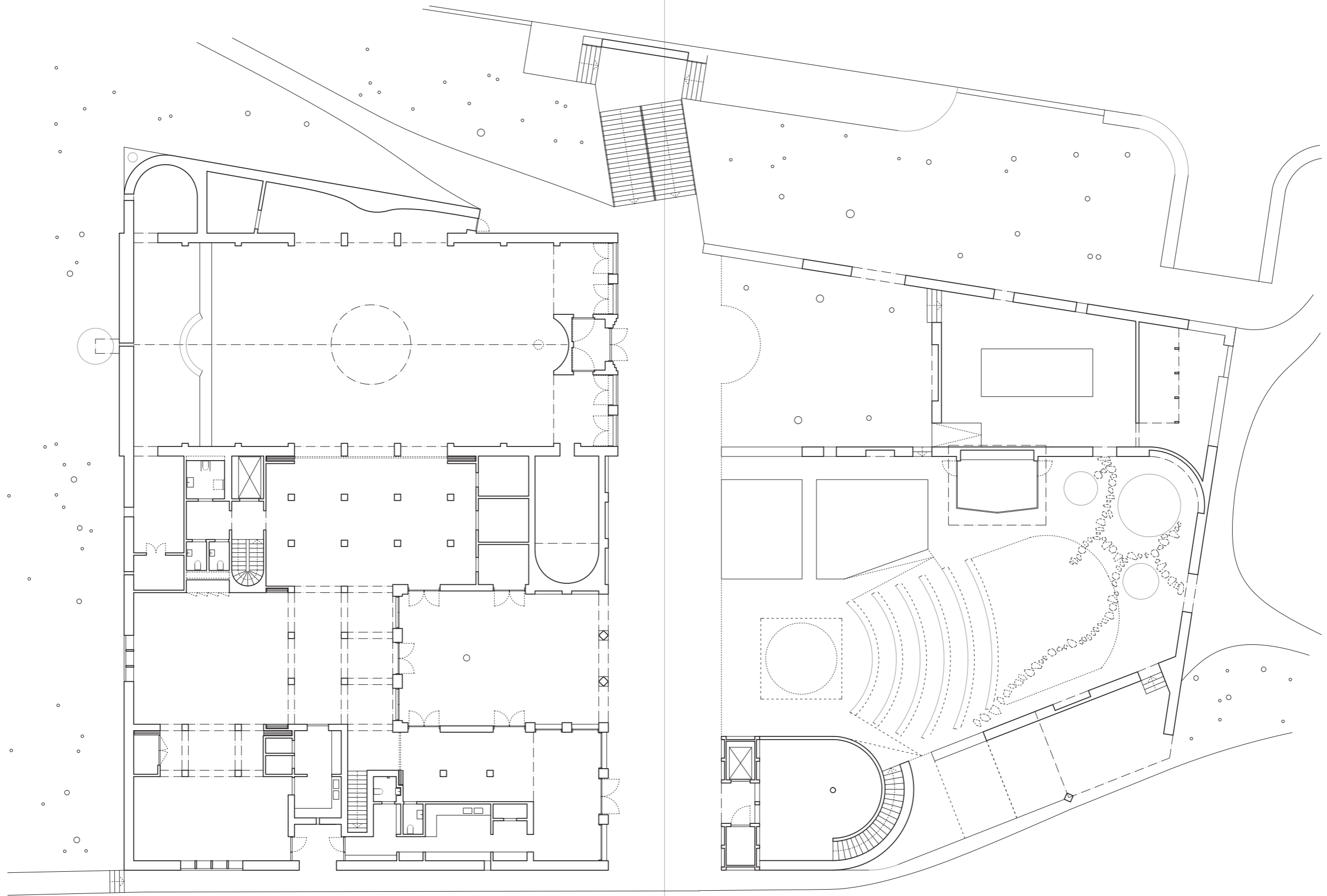
THE WINNING PROPOSAL HAS EMBRACED THE CHURCH'S VISION OF A BRIGHTLY LIT CHURCH SPACE IN A SCANDINAVIAN TRADITION AND FLEXIBLE ASSEMBLY SPACES ADAPTED TO MODERN PARISH LIFE. THE SACRED CHURCH SPACE IS CHARACTERIZED BY ITS WHITEWASHED WALLS, A SHIP-LIKE ROOF, AND ROWS OF SIMPLE WOODEN CHAIRS.

THROUGHOUT THE PROCESS, THE CHURCH HAS PLACED A STRONG EMPHASIS ON SUSTAINABILITY, AS REFLECTED IN THE COMPETITION'S SUBTITLE "DEN GRØNNE KATEDRAL" (THE GREEN CATHEDRAL). THE WINNING PROPOSAL ADDRESSES DESIRES FOR SOCIAL, ECONOMIC, AND ENVIRONMENTAL SUSTAINABILITY, INCLUDING THE USE OF RECYCLED MATERIALS SUCH AS BRICK WALLS BOTH INSIDE AND OUTSIDE.



























## #028 VILLA FJÄLLSVIK



**location:** vindö, stockholm archipelago **architects:** ateljé ö **project year:** 2021 (unbuilt)

IN THE STOCKHOLM ARCHIPELAGO, MORE SPECIFICALLY ON THE ISLAND OF VINDÖ A LARGER PIECE OF HILLY LAND IS TO BE FOUND. THE SITE IS CHARACTERIZED BY ITS SMOOTH GRANITE ROCKS AND DENSE VEGETATION CLIMBING UP AND DOWN THE HILL FALLING STEEP DOWN TO THE LONG BEDROCK SHORELINE BELOW. AN ABSOLUTE DREAM OF A SITE FOR THE CREATION OF A PRIVATE HIDEAWAY.

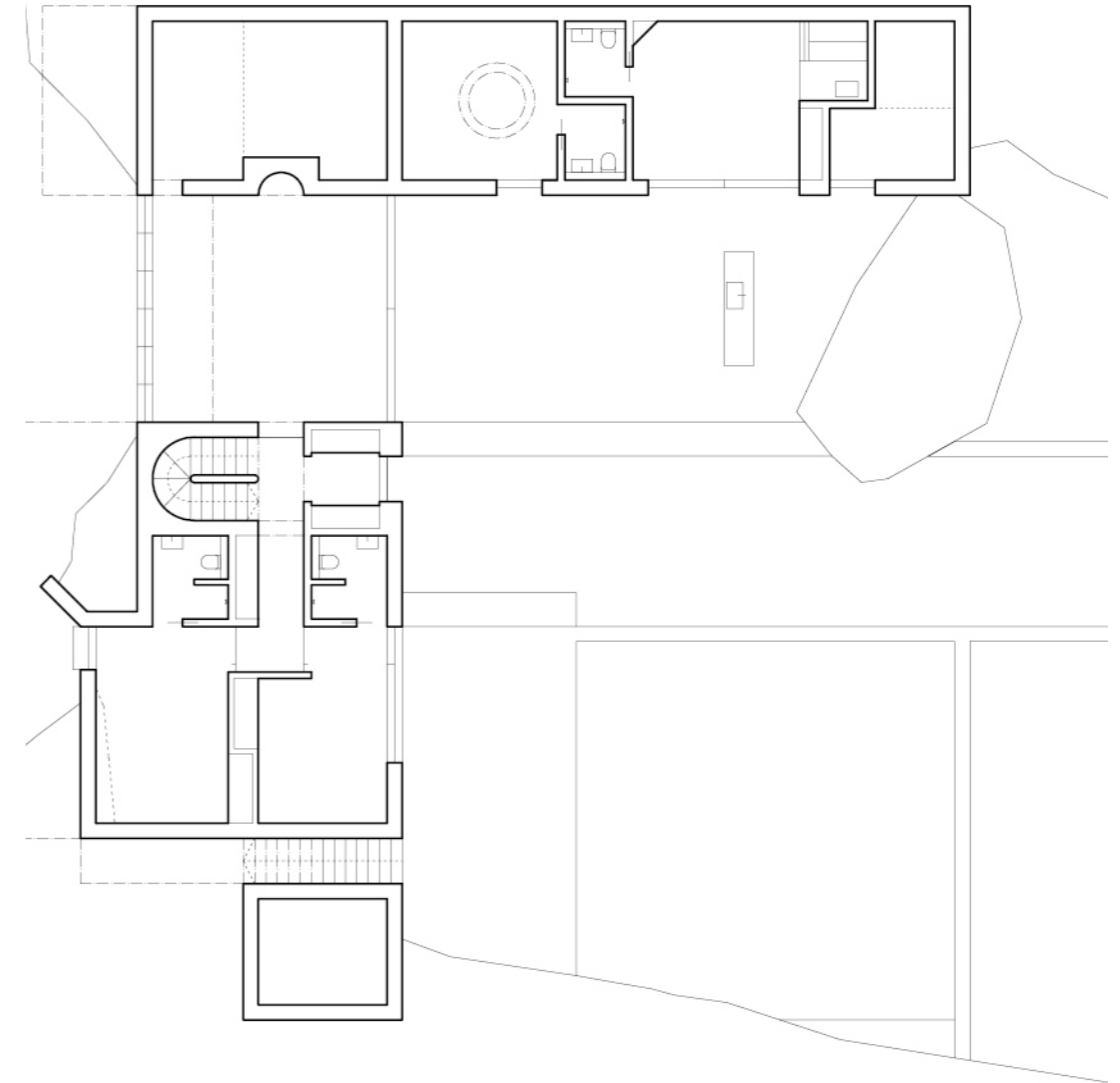
DURING THE WALK ALONG THE WINDING ROAD TAKING YOU TO THE SITE AND THE ARRIVAL THROUGH THE PINE FOREST, A PROMENADE AMONGST ROCKS, HEATHER AND MOSS, THE BREEZE FROM THE SEA AND THE SCENT OF THE FOREST IS EVER PRESENT IN THE AIR.

SITUATED ON THE FRONT RIDGE, TWENTY SOMETHING METERS UP OVERLOOKING THE BAY, THE NEW VILLA RISES FROM THE FOOTPRINT OF AN OBSOLETE FORMER COTTAGE. THE NEW FAÇADE FACING THE SEA IS MODESTLY REFLECTING THE SCALE OF THE REPLACED BUILDING WHILE THE BACK, EMBRACING A SOUTHEAST FACING COURTYARD AND THE FOREST, IS SURPRISING IN SCALE AND EXPRESSION. THE NEW NORTHERN WING IS GENTLY TUCKED INTO THE HILLY LANDSCAPE AND HENCE ONLY VISIBLE TO THE INVITED FEW.

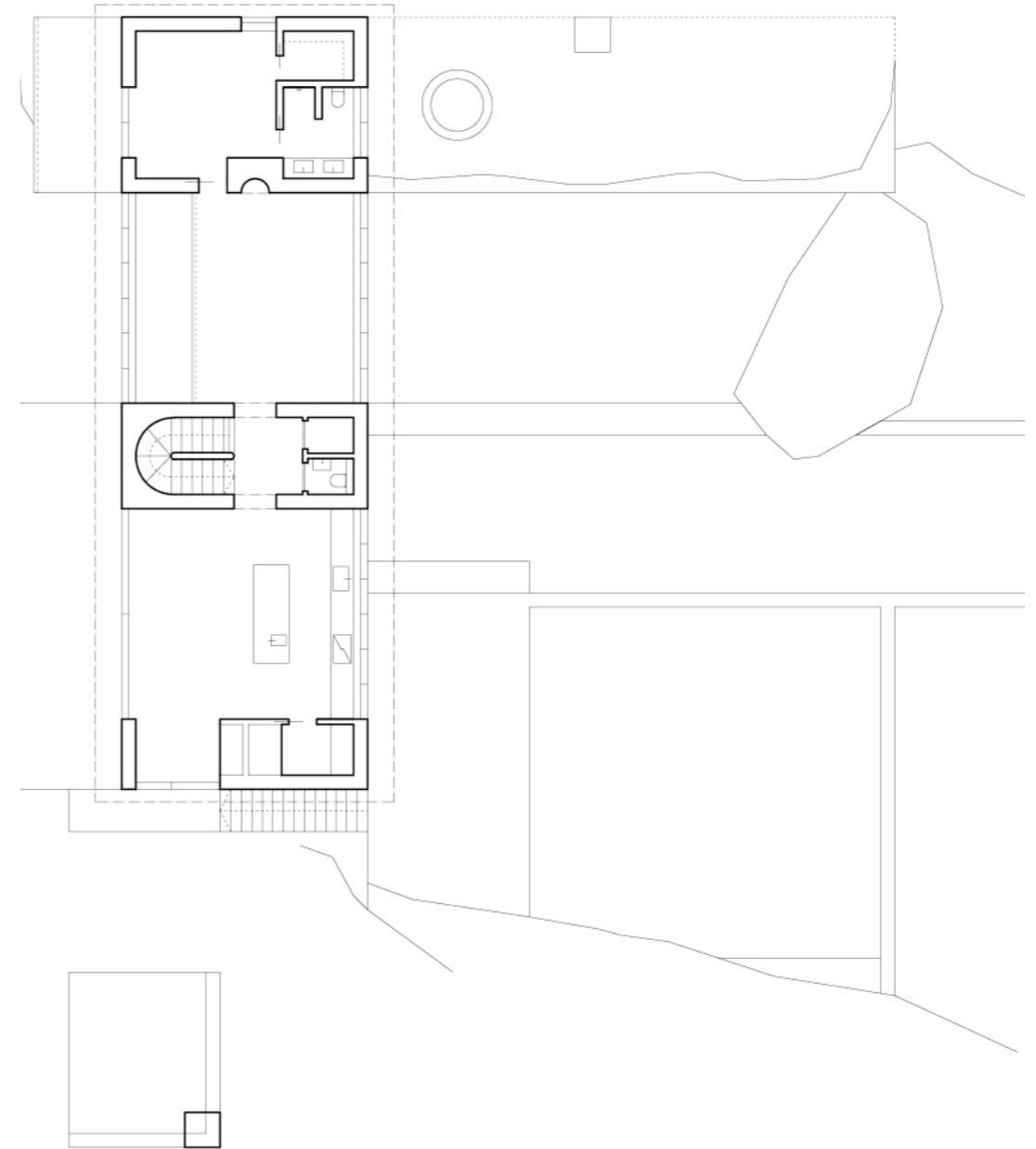
THE VILLA'S SHAPE AND THE PALETTE OF MATERIALS USED IS EQUALLY INSPIRED BY THE SEASIDE CONTEXT AS BY THE WISH TO BE TRUE TO QUALITY AND THE HONESTY IN REAL CRAFTSMANSHIP.

THIS IS A PLACE FOR SECLUSION, AS WELL AS A PLACE TO EXPERIENCE THE ARCHIPELAGO NATURE IN ITS PRIME.

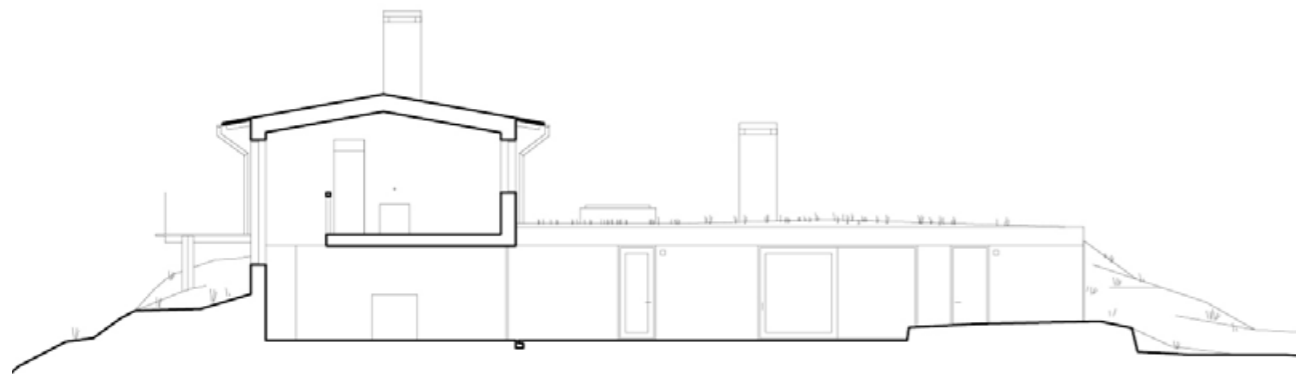


















## #037 Ö17



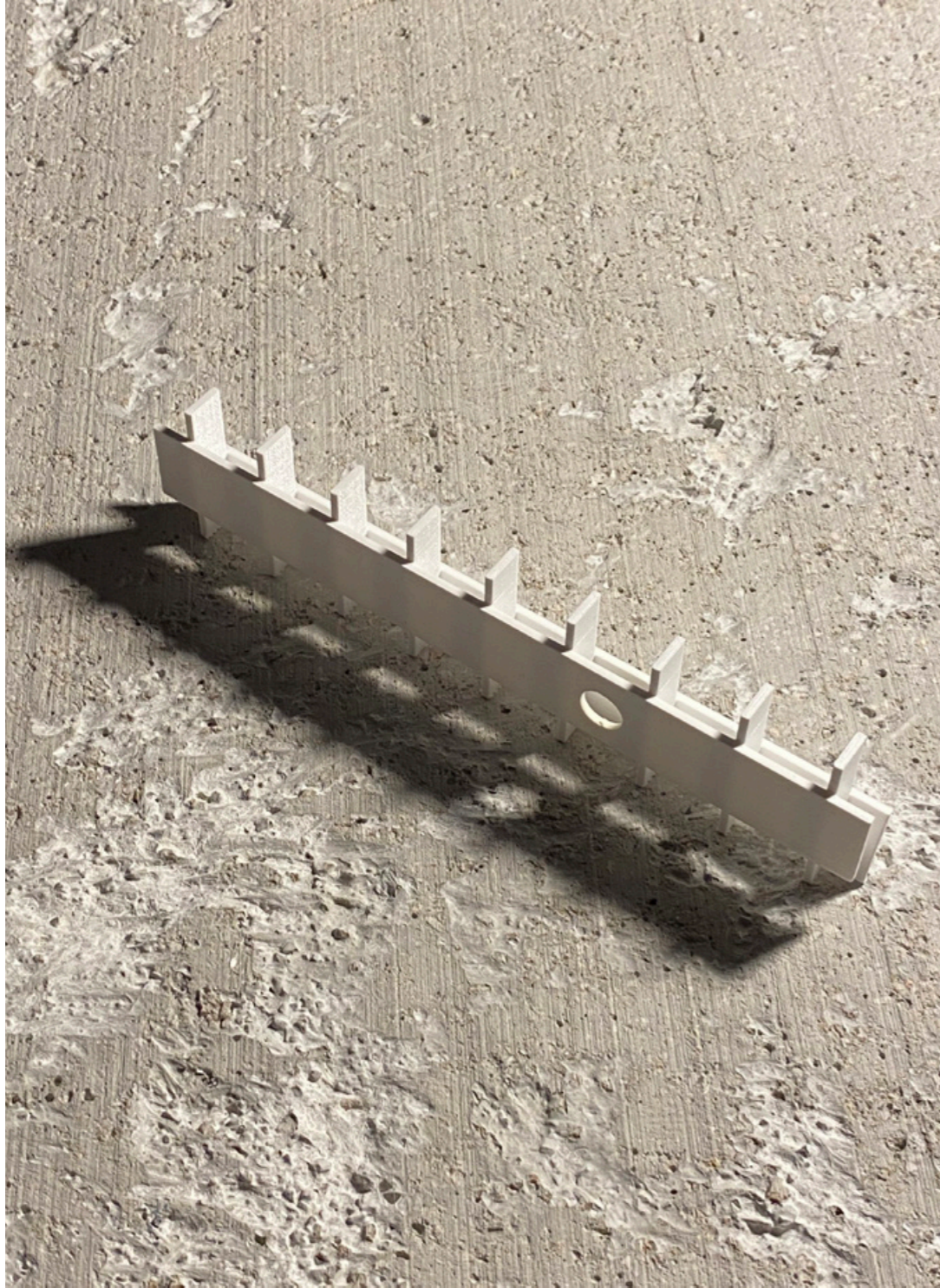
**location:** bungenäs, gotland **architects:** ateljé ö **project year:** 2021, (unbuilt)

Ö17 IS A FORMALIZED VISION OF A HOUSE FOR AN ART COLLECTOR. THE PROJECT HAS DEVELOPED THROUGH THE INTERWEAVE OF ARCHITECTURE AND ART, AN EXPERIMENTAL PROCESS BETWEEN ARCHITECT AND CLIENT. THE DRAWING AND THE PLACEMENT OF ARCHITECTURAL OBJECTS HAS BEEN TOOLS IN GENERATING THE PLAN, WHERE WE TOOK OFF IN THE WORKS OF BERNARD TSCHUMI AND FRANCIS BACON. BY READING THE PROJECT BIT BY BIT AND AS A WHOLE HAS ENABLED A DESIGN PROCESS WHERE WE CREATE SEPARATE PARTS TO TEST IN COMPOSITION TO OTHERS.

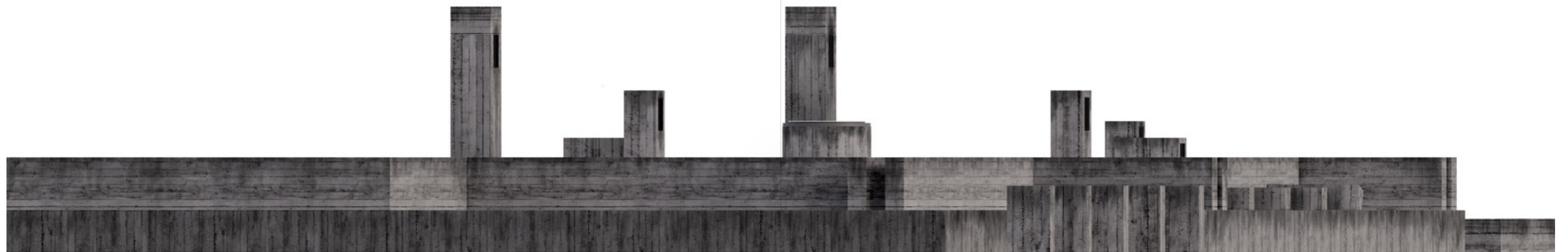
THE SITE SITS WITHIN THE PERIMETER OF AN OLD STONE QUARRY ON GOTLAND. THE LANDSCAPE IS A GREY GRAVEL CANVAS AND DUG OUT OF THE HILL, THE PLOT SITS AT A PLATEAU. THE ONLY POSSIBLE LOCATION FOR THE HOUSE IS PUSHED BACK AGAINST THE ROCKY STEEP, WHERE IT MUST BECOME ONE WITH THE TOPOGRAPHY.

AS A GALLERY THE SPACES CREATE SIGHTLINES, AND THE VIEW IS FRAMED BY THE ARCHITECTURE. ARCHITECTURAL OBJECTS GENERATE PHENOMENA WHERE WE SEE THE TECTONICS AS ART. LIKEWISE THE MATERIAL PALETTE, BALANCED BY PERFECTION AND IMPERFECTION, CREATES AN ADDITIONAL LAYER TO THE EXPERIENCE. THIS IS A PROJECT DREAMING OF A MYSTICAL SPACE THAT EVOKE ALL SENSES AND INVITES TO A LIFE IN HARMONY WITH NATURE, ART AND ARCHITECTURE.

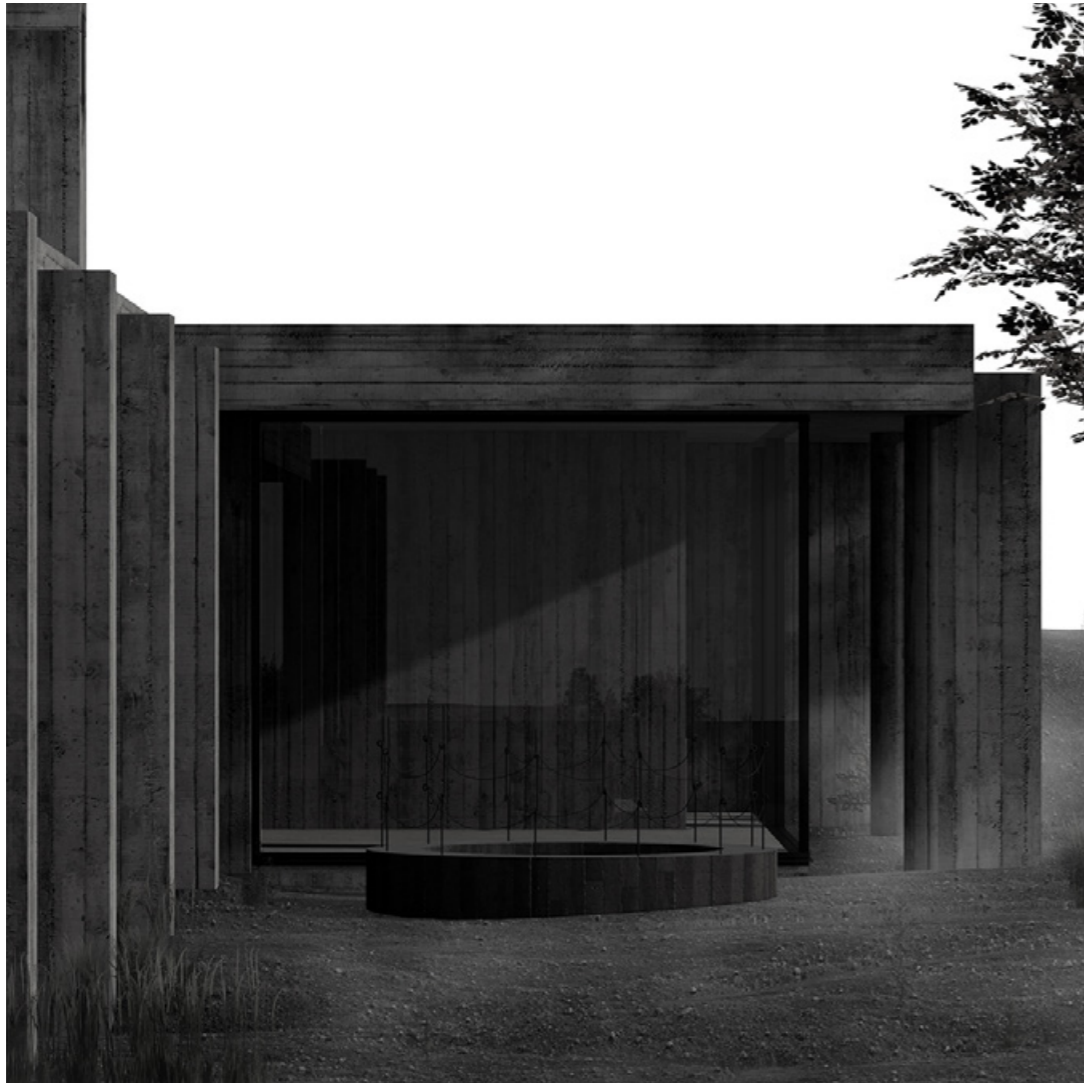




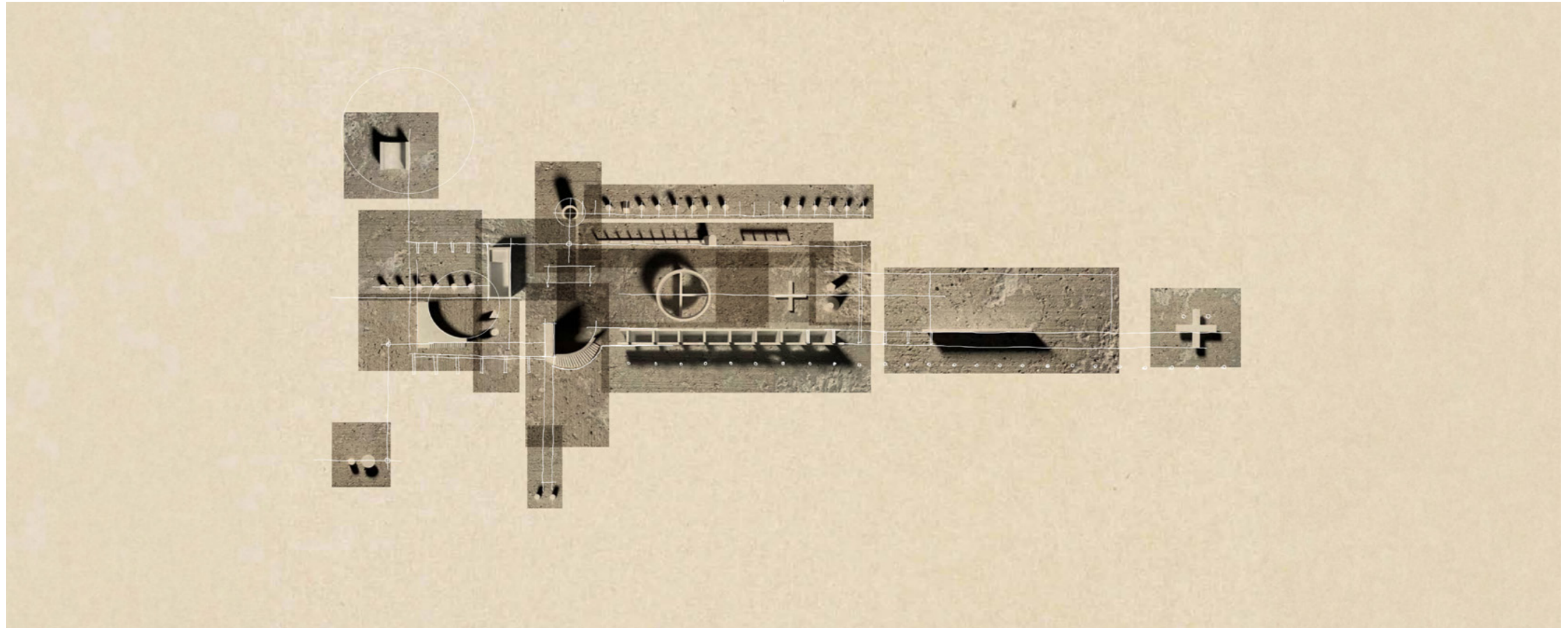








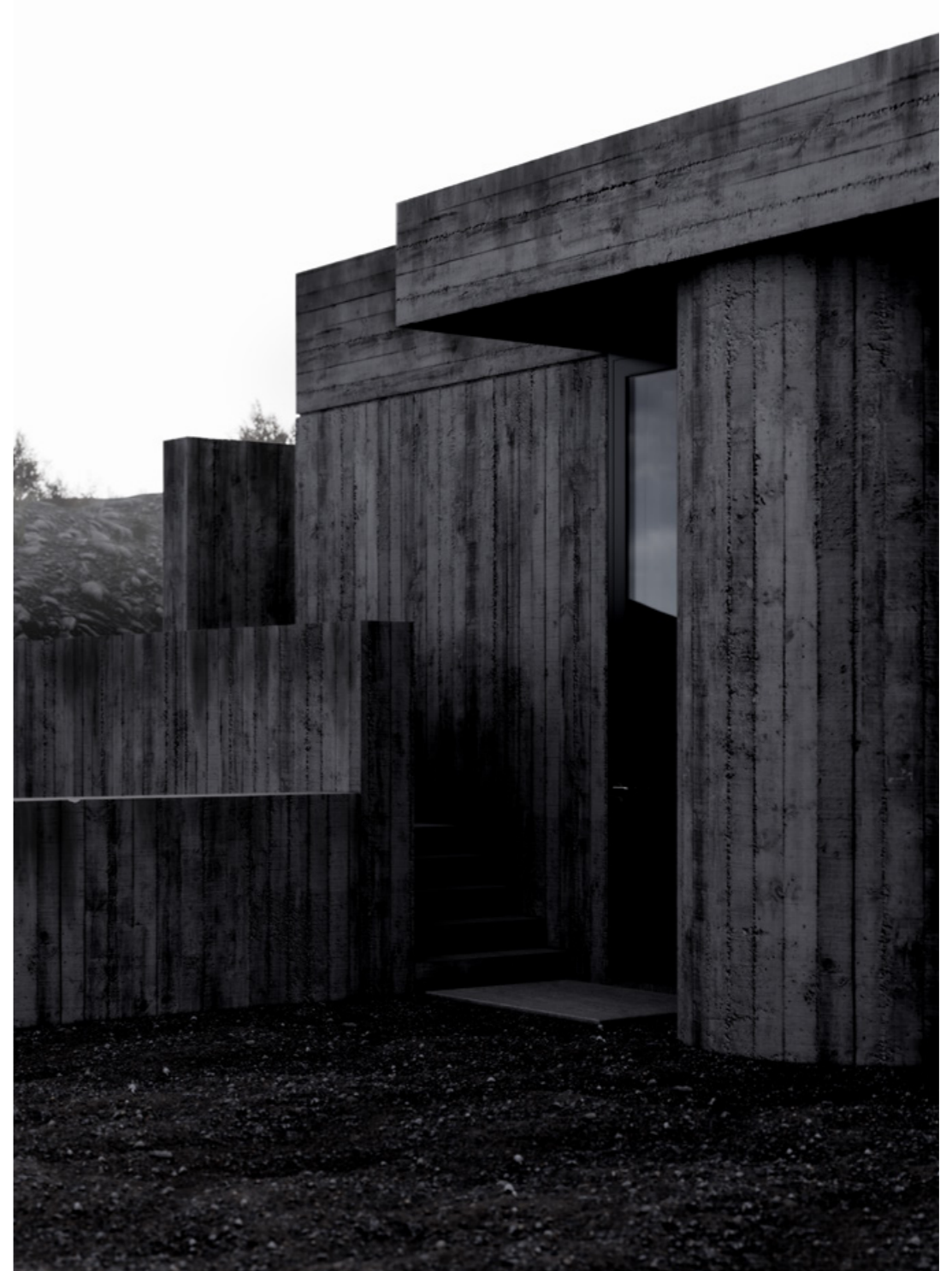
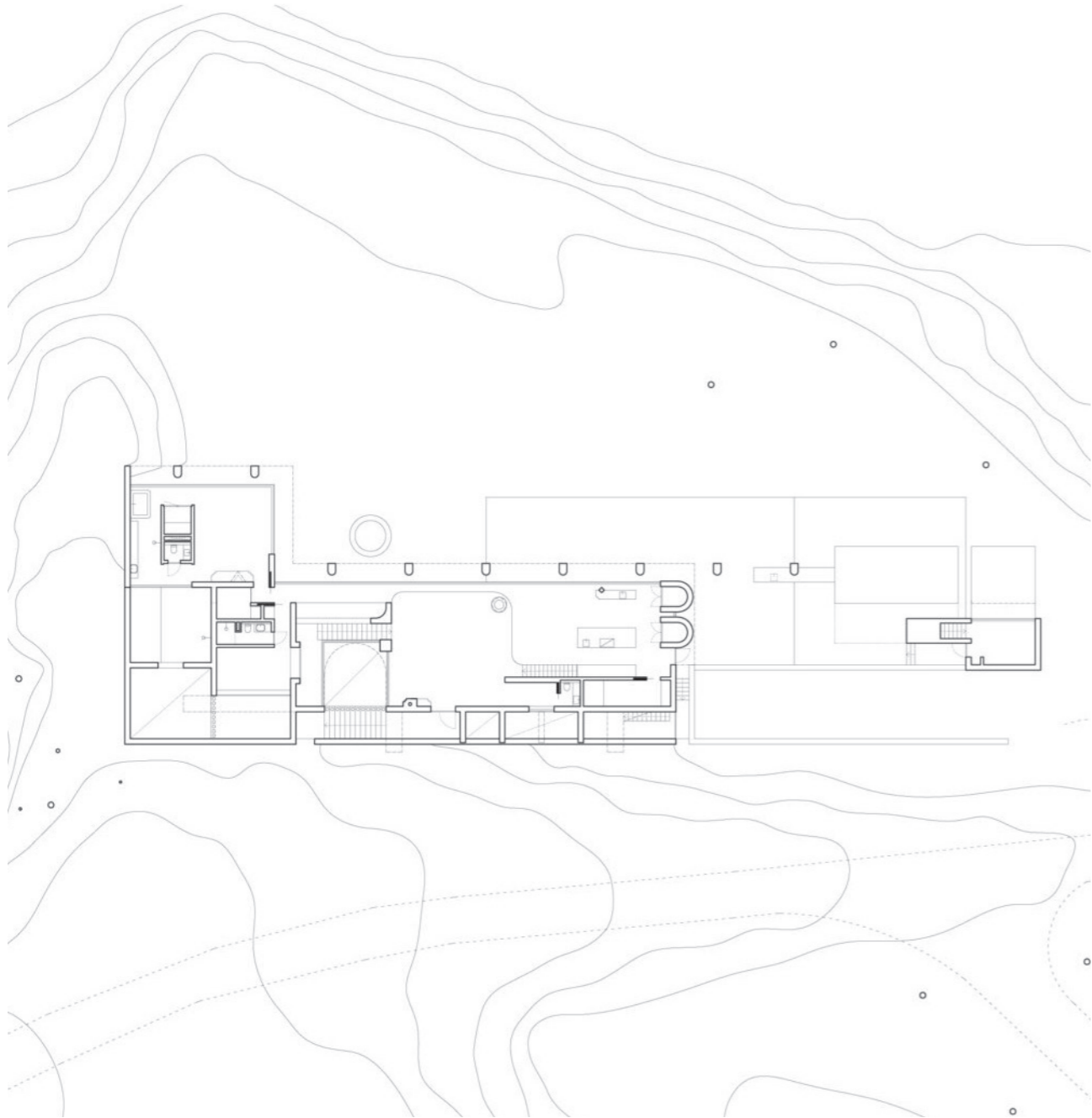




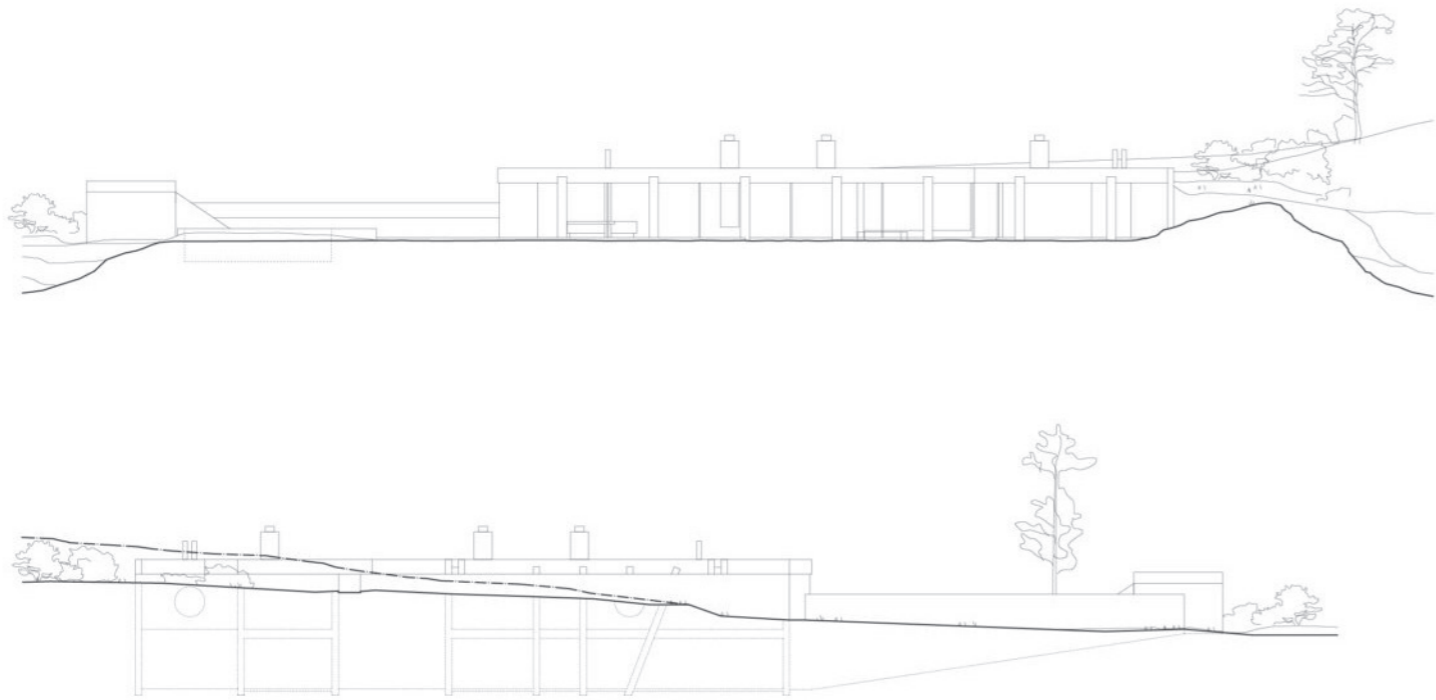
















ATELJÉ Ö

ST HANSGATAN 38B  
621 56 VISBY  
SWEDEN

[INFO@ATELJEO.SE](mailto:INFO@ATELJEO.SE)